



PORTOS TR7
spółka z ograniczoną odpowiedzialnością
spółka komandytowa
ul. Złota 71
62 - 800 Kalisz
tel. 62 / 768 40 00
sekretariat@portosrolety.pl
www.portosrolety.pl

PORTOS drive controlling system

USER MANUAL

DC5T

The remotes operate
at 433 MHz
frequency

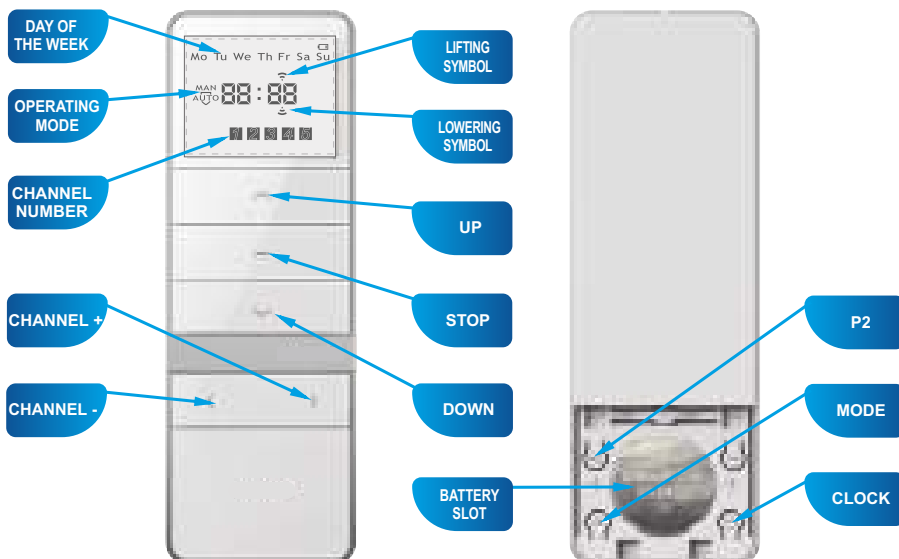


Technical data :

Power:	3V battery (CR 2430)
Operating frequency:	433 MHz
Transmission power:	10 mW
Operating temperature:	from -10 °C to +50 °C
Operating range:	Determined by architectural and regulatory factors



Device characteristics:



DC5 (5 channels)

1. Programming a radio drive on a specific channel of any transmitter



IMPORTANT!!!

During any radio drive programming operations, only the programmed drive should be connected to power supply.

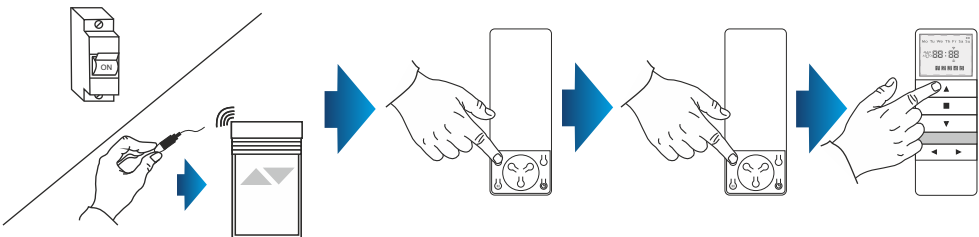
Multi-channel remote controls are provided with one additional channel which automatically saves all programmed devices. This channel is not programmable.

Programming the drive in the below presented manner will remove all previously programmed transmitters. To add another transmitter or channel, see point 5.

New models of the drive (motor) (dating from the middle of 2023) come with changed signalling. Response of the drive (motor) is herein divided into that characteristic of the previous and new drive model. The procedure of programming has not changed but for certain waiting times.

The drive (motor) does not respond to commands during the approval process.

	OPERATION	RESPONSE OF THE DRIVE (MOTOR) (previous model)	RESPONSE OF THE DRIVE (MOTOR) (new model)
1.	Using the channel + / - buttons, select the channel you want to program.		
2a.	Switch on the programming mode by connecting the drive to power supply. Once connected to power, the drive will respond, the user will then have about 5 seconds for completion of instructions explained in the next point.	1 x long audio signal 1 x up-down movement confirmation	The drive (motor) not paired with any remote control: 1 x long audio signal 1 x up-down movement confirmation. The drive (motor) paired with a remote control: 3 x audio signals.
2b.	Switch on the programming mode by pressing the microswitch button for not longer than 3 seconds (new model) or until you hear an audio signal (previous model).	After the lapse of 3 seconds: 1 x audio signal 1 x up-down movement confirmation	Once the button is released: 1 x audio signal 1 x up-down movement confirmation
3.	Press P2 button on the remote control.	1 x audio signal	1 x audio signal 1 x up-down movement confirmation
4.	Press P2 button on the remote control again.	1 x audio signal	1 x audio signal 1 x up-down movement confirmation
5.	Press the "Up" button or "Down" button on the remote control. The "Down" button if used will reverse the directions after programming.	6 x short audio signal 1 x up-down movement confirmation	3 x audio signals 1 x up-down movement confirmation



2. Programming an external radio receiver on a specific channel of any transmitter.



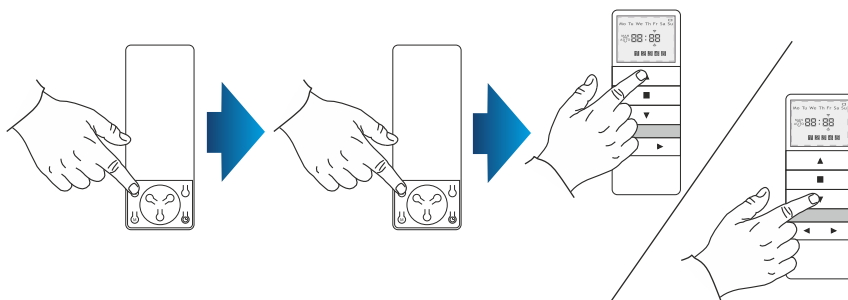
IMPORTANT!!!

If you have an external radio receiver, follow the user manual for the device (i.e. XT-R, PPKR-313 or PPKR-400).

3. Changing the direction of rotation of the drive.

METHOD 1:

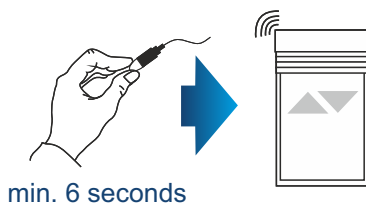
After assigning the device to a motor, check if the running direction is correct by switching the motor on with the device. To change the running direction of the motor, you need to reprogram the channel (point 1 of this manual) by changing the programming method – if the motor was programmed following the P2 + P2 + UP method and the direction of rotation needs reversing, reprogram the motor by finishing the programming process with direction reversal, i.e. P2 + P2 + DOWN. The drive will register the direction change.



METHOD 2:

Using the microswitch located on the lead emerging from the head of the drive, you can change the drive's running direction. To do so, you should:

1. Press the microswitch down for 6 seconds.
2. After 1 second, the motor will confirm with a short beep sound and move up and down, whereas after the next 5 seconds the motor will confirm the direction change with 3 beeps and the roller shutter will move UP and DOWN twice.



4. Channel deletion (deleting all channel settings).

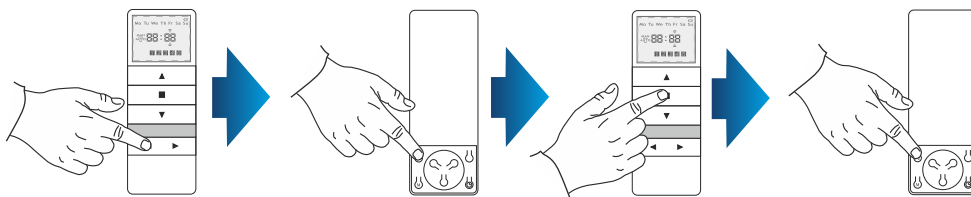


IMPORTANT!!!

If you delete the settings of a particular channel, drives assigned to that channel will be completely deleted from other channels as well.

METHOD 1:

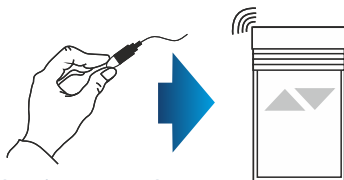
1. Select a previously programmed channel on the display:
2. Press P2, the motor will make a single beep sound and move briefly up and down.
3. Press STOP, the motor will make a single beep sound.
4. Press P2 again, you will hear 4 beeps and the roller shutter will move briefly up and down.



METHOD 2:

Using the microswitch located on the lead emerging from the head of the drive, you can delete a previously programmed transmitter channel. To do so, you should:

1. Press the microswitch down for at least 15 seconds.
2. After 1 second, the motor will make a short beep sound and move up and down, whereas after the next 5 seconds, the motor will confirm with 3 beeps and the roller shutter will move UP and DOWN twice, and finally after 15 seconds the motor will make 3 beeps and the roller shutter will move UP and DOWN once.



METHOD 3:

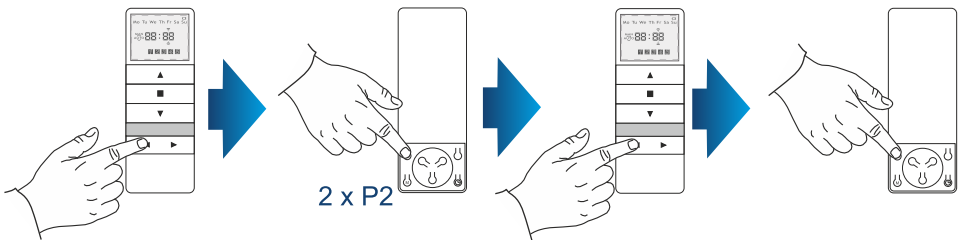
min. 15 seconds

Reprogramming the radio drive on a given channel (point 1 of this manual) automatically deletes previous settings.

5. Adding another channel (transmitter) to the motor.

To add another channel or another device, start with the transmitter which was programmed first. While adding an additional transmitter (channel), do not disconnect the motor from power supply! Transmitters must be located within the receivers' range.

1. Select a previously programmed channel on the display of the active transmitter.
2. Press P2, the motor will make a single beep sound and move briefly up and down.
3. Press P2 again, the motor will make a single beep sound again.
4. Press P2 on the device you wish to program. You will hear 5 beeps and the motor will move briefly UP and DOWN.



6. Device operating mode.

The PORTOS-RM radio drive can operate in two modes:

Support mode

Pressing and releasing the UP or DOWN button activates a programmed motor function (opening or closing the roller shutter). The motor will operate until the roller shutter is fully opened or closed.

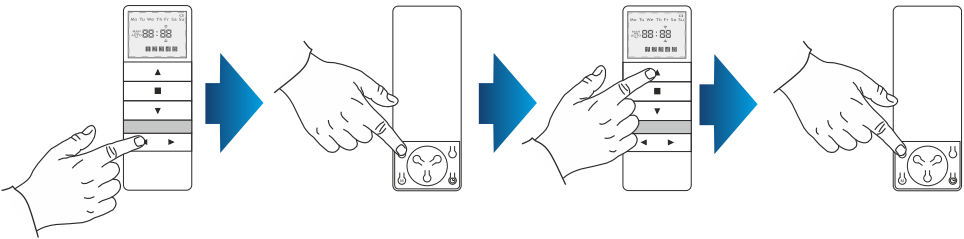
Non-support mode

The motor will only operate when the button is pressed down. Releasing the button stops the motor. If the button is pressed down for more than 2 seconds, the motor will start operating in the support mode, i.e. until the roller shutter is fully opened or closed.

7. Changing the operating mode.

You can switch between the operating modes by following the instructions below:

1. Select a previously programmed channel.
2. Press P2, the motor will make a single beep sound and move briefly UP and DOWN.
3. Press UP, the motor will make a single beep sound.
4. Press P2, you will hear 3 beeps and the motor will move briefly UP and DOWN.

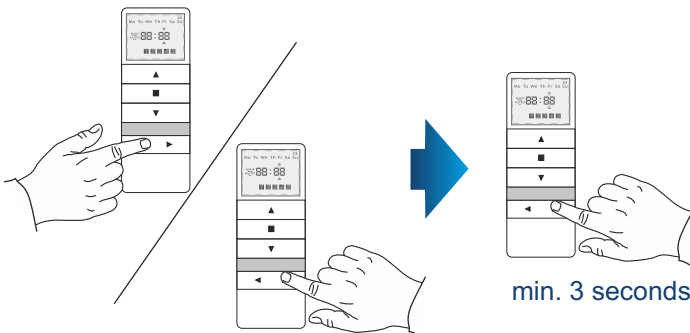


The remote operating mode change is complete. It affects all channels and remotes assigned later.

8. Deactivation of selected channels:

1. Use the CHANNEL + and CHANNEL – buttons on the device to select which channels you wish to deactivate.
2. To deactivate selected channel hold the CHANNEL + button for 3 seconds (digit of the channel will start flashing).

Re-executing the procedure activates the relevant channel. Channel deactivation works only in AUTO mode.



9. Device functions:

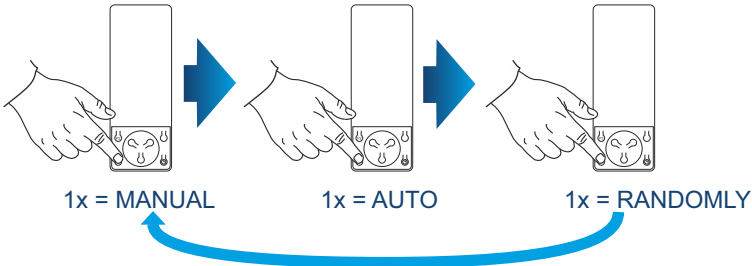
The transmitter can operate in three modes:

MAN – manual mode – manual lifting available only

AUTO – automatic mode – activates both: timer's functions and manual operation

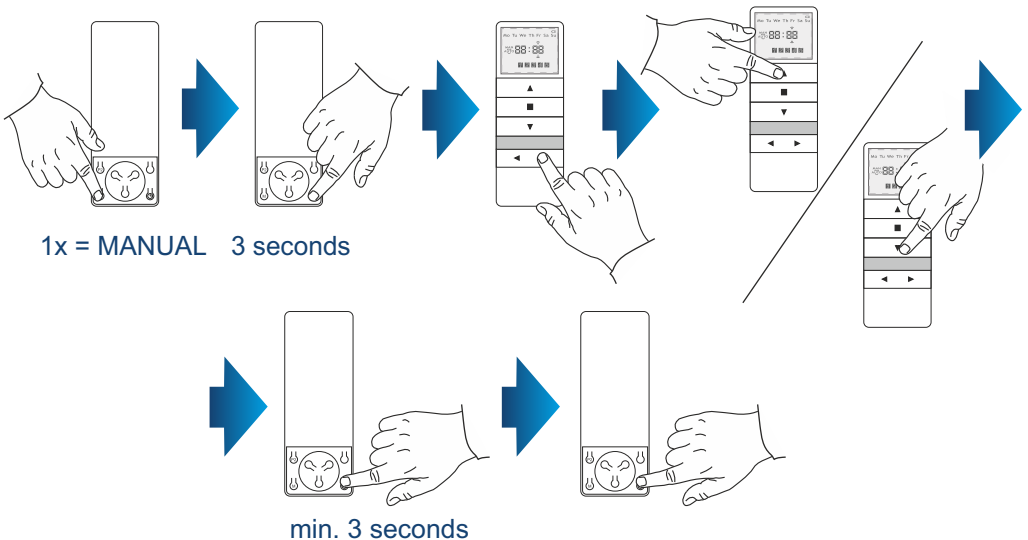
RANDOMLY – random mode – manual operating available, whereas automatic functions are booted with +/- 15 minutes offset

CHANGE OF THE MODES: To change the operation mode of the device press M button.



10. Setting the time and day of the week:

1. Briefly press M button and switch to MANUAL mode.
2. Press the CLOCK button for at least 3 seconds.
3. Press the CHANNEL + button to select the option of changing hours, minutes or days of the week.
4. Press UP and DOWN buttons to set the required value.
5. Confirm applied changes by holding The CLOCK button for 3 seconds (time set will start flashing).
6. Briefly hold the CLOCK button to activate the clock



11. Programming the lifting and lowering times:

1. Select the desired channel on the remote control. Press the MODE button and set the mode to AUTO.
2. Press and hold the TIME CHANGE button for 3s. - The screen displays the time of day of the week. Using the UP and DOWN buttons, select the day of the week. The UP and DOWN buttons allow you to check the lift and lower times already set.
3. Press the TIME CHANGE button briefly - the time of day starts flashing. Subsequent presses change the day of the week.
4. Use UP and DOWN buttons to set the time of lifting.
5. Press the CHANNEL+ button to move to the minutes setting - the minutes of lifting start flashing.
6. Use UP and DOWN buttons to set minutes of lifting.
7. Use the OPERATION MODE button to set the lowering time - the lowering time starts flashing.
8. Use the UP and DOWN buttons to set the lowering time.
9. Press the CHANNEL+ button to move to the minutes setting - the minutes of lifting start flashing.
10. Use UP and DOWN buttons to set the lowering minutes.
11. Press the CHANGE TIME button to change the settings for the next day. To make changes, follow steps 4-11.
12. After setting the lifting and lowering times, confirm the changes by holding down the TIME CHANGE button for 3 seconds. The hour will blink 3 times thus saving the settings.

