



PORTOS drive controlling system

USER MANUAL

PX15T

PORTOS Sp.J.
ul. Złota 71
62 - 800 Kalisz
tel. 62 / 768 40 00
sekretariat@portosrolety.pl
www.portosrolety.pl

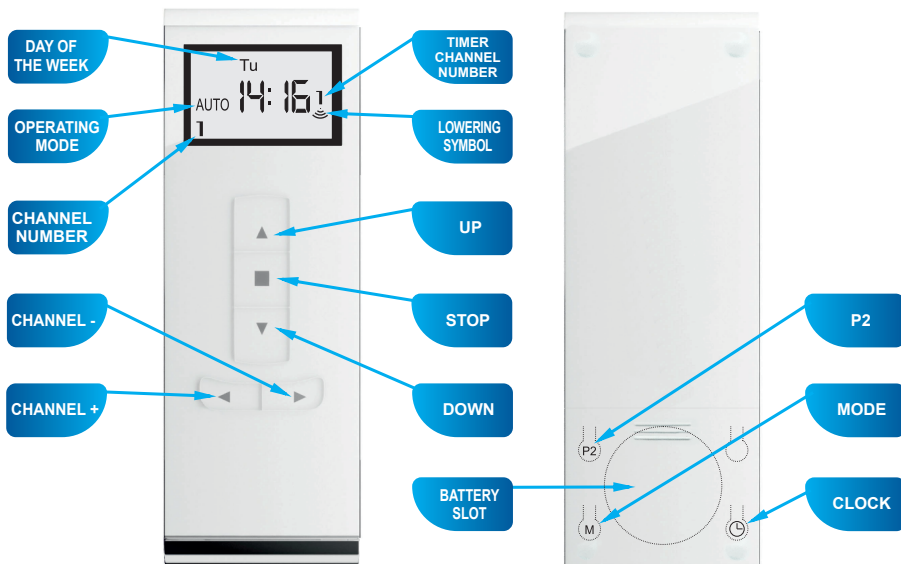
The remotes operate
at 433 MHz
frequency



Technical data :

Power:	3V battery (CR 2430)
Operating frequency:	433 MHz
Transmission power:	10 mW
Operating temperature:	from -10 °C to +50 °C
Operating range:	Determined by architectural and regulatory factors

!!! Device characteristics:



PX 15 (15 channels)

1. Programming the radio drive on a specific channel of any transmitter.

A. Method one

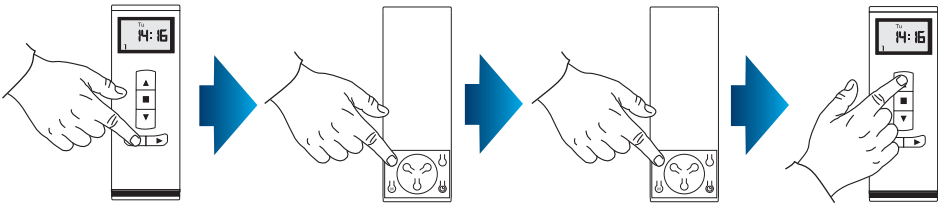


IMPORTANT!!!

While programming, only the drive being programmed should be connected to a power supply.

After connecting the motor to a power supply, you will hear a long single sound and the motor will move briefly up and down (if you do not press any button within 12 seconds, the motor will quit the programming mode).

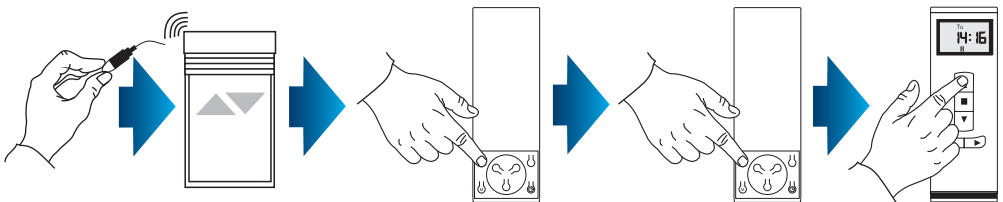
1. Using the CHANNEL + / - buttons, select the channel you wish to program:
2. Press the P2 button, the motor will make a single beep sound.
3. Press P2 again, the motor will make a single beep sound again.
4. Press the UP button, the motor will make 6 beeps and move briefly up and down, which means that the channel has been programmed.



B. Method two

In order to program the drive, open the inspection hatch of the roller shutter and:

1. Press the microswitch located on the lead emerging from the head of the drive for 1 second – the motor will confirm with a single beep sound and the shutter will move briefly UP and DOWN.
2. Using the CHANNEL + / - buttons, select the channel you want to program and press P2 – the motor will make a single beep sound.
3. Press P2 again, the motor will make a single beep sound again.
4. To finish the programming process, press UP. You will hear 6 beeps and the roller shutter will move briefly up and down.



2. Programming an external radio receiver on a specific channel of any transmitter.



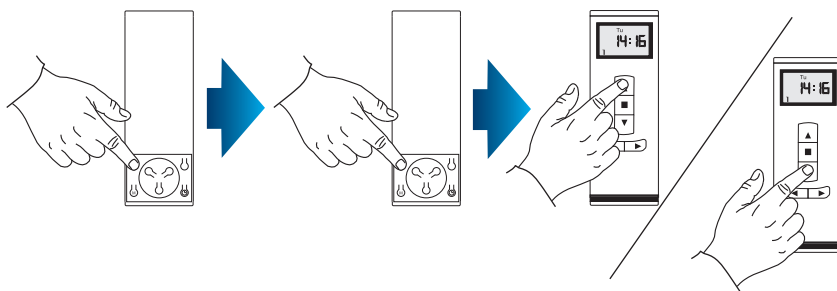
IMPORTANT!!!

If you have an external radio receiver, follow the user manual for the device (i.e. XT-R, PPKR-313 or PPKR-400).

3. Changing the direction of rotation of the drive.

METHOD 1:

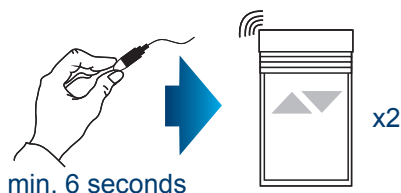
After assigning the device to a motor, check if the running direction is correct by switching the motor on with the device. To change the running direction of the motor, you need to reprogram the channel (point 1 of this manual) by changing the programming method – if the motor was programmed following the P2 + P2 + UP method and the direction of rotation needs reversing, reprogram the motor by finishing the programming process with direction reversal, i.e. P2 + P2 + DOWN. The drive will register the direction change.



METHOD 2:

Using the microswitch located on the lead emerging from the head of the drive, you can change the drive's running direction. To do so, you should:

1. Press the microswitch down for 6 seconds.
2. After 1 second, the motor will confirm with a short beep sound and move up and down, whereas after the next 5 seconds the motor will confirm the direction change with 3 beeps and the roller shutter will move UP and DOWN twice.



4. Channel deletion (deleting all channel settings).

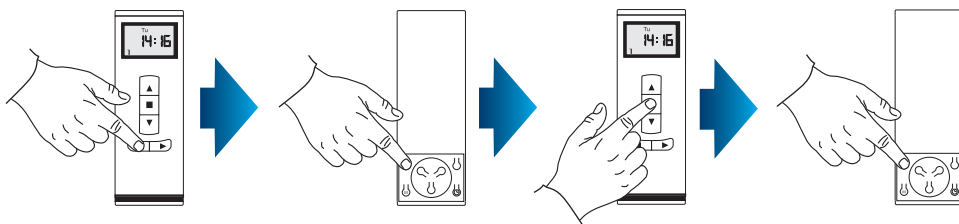


IMPORTANT!!!

If you delete the settings of a particular channel, drives assigned to that channel will be completely deleted from other channels as well.

METHOD 1:

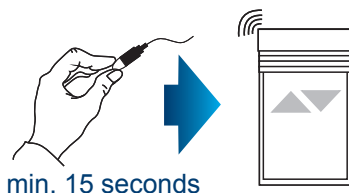
1. Select a previously programmed channel on the display.
2. Press P2, the motor will make a single beep sound and move briefly up and down.
3. Press STOP, the motor will make a single beep sound.
4. Press P2 again, you will hear 4 beeps and the roller shutter will move briefly up and down.



METHOD 2:

Using the microswitch located on the lead emerging from the lead of the drive, you can delete a previously programmed transmitter channel. To do so, you should:

1. Press the microswitch down for at least 15 seconds.
2. After 1 second, the motor will make a short beep sound and move up and down, whereas after the next 5 seconds, the motor will confirm with 3 beeps and the roller shutter will move UP and DOWN twice, and finally after 15 seconds the motor will make 3 beeps and the roller shutter will move UP and DOWN once.



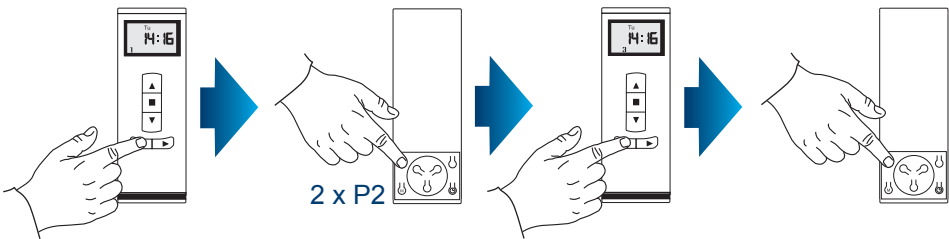
METHOD 3:

Reprogramming the radio drive on a given channel (point 1 of this manual) automatically deletes previous settings.

5. Adding another channel (transmitter) to the motor

To add another channel or another device, start with the transmitter which was programmed first. While adding an additional transmitter (channel), do not disconnect the motor from power supply! Transmitters must be located within the receivers' range.

1. Select a previously programmed channel on the display of the active transmitter.
2. Press P2, the motor will make a single beep sound and move briefly up and down.
3. Press P2 again, the motor will make a single beep sound again.
4. Press P2 on the device/channel you wish to program. You will hear 5 beeps and the motor will move briefly UP and DOWN.



6. Device operating mode

The PORTOS-RM radio drive can operate in two modes:

Support mode

Pressing and releasing the UP or DOWN button activates a programmed motor function (opening or closing the roller shutter). The motor will operate until the roller shutter is fully opened or closed.

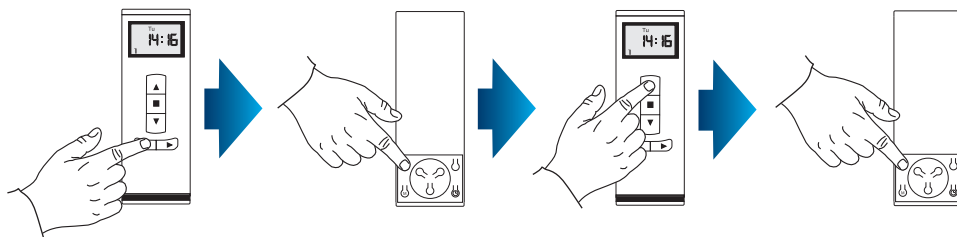
Non-support mode

The motor will only operate when the button is pressed down. Releasing the button stops the motor. If the button is pressed down for more than 2 seconds, the motor will start operating in the support mode, i.e. until the roller shutter is fully opened or closed.

7. Changing the operating mode

You can switch between the operating modes by following the instructions below:

1. Select a previously programmed channel.
2. Press P2, the motor will make a single beep sound and move briefly UP and DOWN.
3. Press UP, the motor will make a single beep sound.
4. Press P2, you will hear 3 beeps and the motor will move briefly UP and DOWN.



The remote operating mode change is complete. It affects all channels and remotes assigned later.

8. Functions of the device:

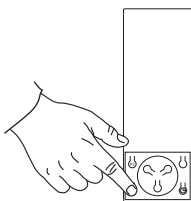
The transmitter can work in three operating modes:

MAN – manual mode – only manual operating is allowed.

AUTO – automatic mode - active timer and manual functions.

AUTO – random mode – manual function active, whereas automatic functions are activated with a time difference of +/- 15 minutes.

MODE CHANGE: To change the operating mode of the device, press the M button for at least 3 seconds.



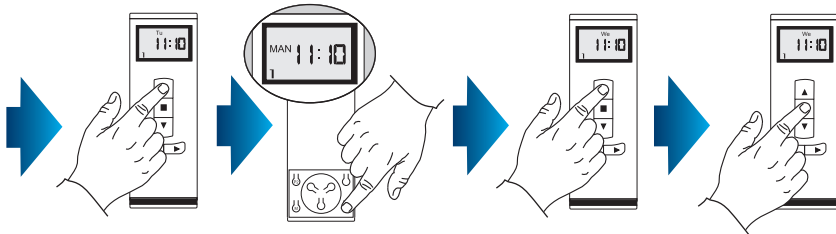
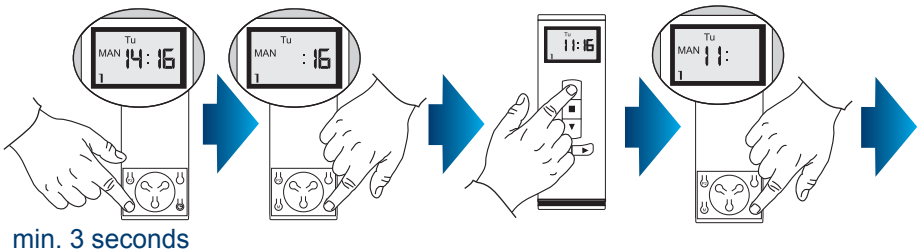
min. 3 seconds

9. Device functions:

TIME/DATE SETTING:

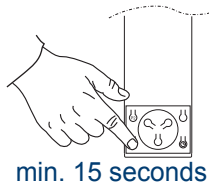
To change the time / date of the device, follow the steps below:

1. Hold the M button down for at least 3 seconds to enter the MAN mode.
2. Press the CLOCK button -> the hour value will start flashing on the display.
3. Use the UP/DOWN buttons to set the hour value.
4. After setting the hour value, press the CLOCK button to set the minute value.
5. Use the UP/DOWN buttons to set the value.
6. After setting the minute value, press the CLOCK button to set the day of the week.
7. Use the UP/DOWN buttons to set the day of the week.
8. Once the values have been set, confirm by pressing the STOP button.



RESETTING THE TIMER:

To reset all timer settings, press P2 down for at least 15 seconds. After that, the timer settings will have been reset.



TIMER SETTING:

With the PX15T device, you can set 9 automatic opening programs and 9 closing programs for any channel (1-15) based on four available time options:

- A. Monday - Sunday
- B. Monday - Saturday
- C. Monday - Friday
- D. Single day of the week

To set the opening/closing times, follow the steps below:

1. Use the M button (holding it down for 3 seconds) to enter the AUTO mode.
2. Press the M button once -> you will see a window with the default opening value for program 1. If the display does not show any value, use the CHANNEL +/- buttons to choose the channel for which you want to set program 1 opening and closing times.
3. Use the CHANNEL +/- buttons to select any channel for which program 1 should be used.
4. To change the opening time for program 1, press the CLOCK button – the hour value will start flashing. Use the UP/DOWN buttons to set the hour value. Press the CLOCK button again to change the minute value or the day of the week for program 1 opening operations.
5. Once all the values have been set for program 1 raising operations, press the M button to set the lowering values for program 1 and set the hour, minute and day of the week values (as described above).
6. Once all the values for program 1 opening and closing operations have been set, press the CHANNEL (+) button to set the next channel.
7. Once the values have been set, press STOP.

