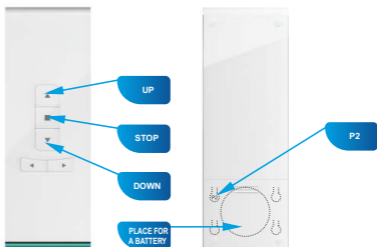


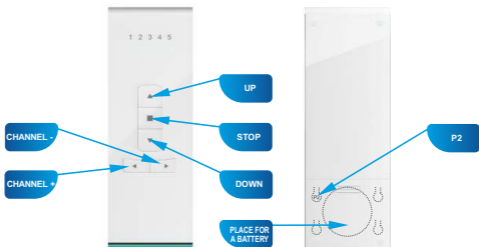
Controllers operate
at 868 MHz



Transmission power: ERP<25 mW



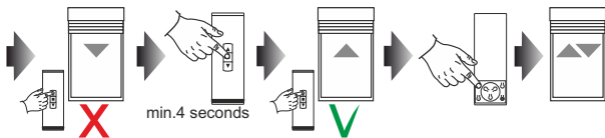
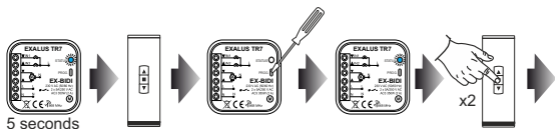
PX-BIDI (1 channel)



NX-BIDI (12 channel)

1. ASSIGNING A TRANSMITTER TO THE CONTROLLER:

1. Connect the controller to the power supply, the STATUS diode blinks blue for 5 seconds.
2. Use channel +/- buttons (for multi-channel devices) to select the channel number on which the device is to be programmed on the selected transmitter (PX-BIDI or NX-BIDI).
3. Press the PROG button on the EX-BIDI controller for 1 second.
4. When the diode lights up blue, press the STOP button twice - the drive will confirm it with a short DOWN/UP movement.
5. Run the roller shutter using the DOWN/UP buttons to check the correctness of the directions.
6. If the directions are reversed, hold the STOP button for a minimum of 4 seconds - the roller shutter will confirm the change of directions with a short DOWN/UP movement.
7. Press the P2 button on the transmitter - the roller shutter will confirm the permanent assignment of the transmitter with a short DOWN/UP movement.

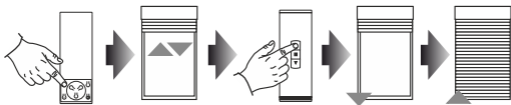


NOTE: If the controller has not been calibrated yet, it is necessary to perform the autocalibration

2. AUTOCALIBRATION OF THE EX-BIDI CONTROLLER

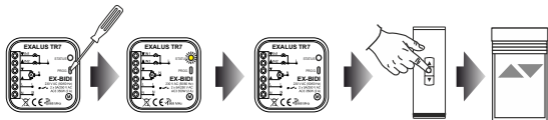
NOTE: Before the autocalibration starts, the roller shutter drive must have pre-set end positions. If they have not been adjusted, this should be done immediately.

1. Press the P2 button on the transmitter - the roller shutter will confirm it with a short DOWN/UP movement.
2. To start the autocalibration, press the UP button on the transmitter - the roller shutter will make 2-3 cycles automatically to learn the set end positions.



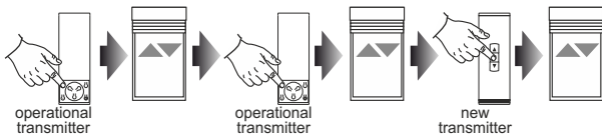
3. ADDING ANOTHER CHANNEL/ TRANSMITTER WITH THE EX-BIDI CONTROLLER:

1. Ensure access to the front panel of the controller.
2. Press the PROG button once on the controller - the STATUS diode will light up yellow and then go off.
3. Press the STOP button on the selected channel of any transmitter - the roller shutter will confirm programming the settings with a short DOWN/UP movement.



4. ADDING ANOTHER CHANNEL/ TRANSMITTER WITH THE EXISTING TRANSMITTER

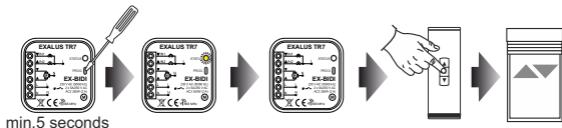
1. Press the P2 button on the existing channel of the selected transmitter - the roller shutter will confirm it with a short DOWN/UP movement.
2. Press the P2 button again - the roller shutter will confirm it again with a short DOWN/UP movement.
3. Press the STOP button on the new transmitter/ channel to add a new transmitter - the roller shutter will make a short DOWN/UP movement to confirm adding a new transmitter.



NOTE: The procedure of adding another transmitter/ channel performed again, deletes a channel/ transmitter. It is not possible to delete all existing transmitters assigned to the EX-BIDI controller using the abovementioned procedure because one master transmitter will always remain permanently programmed.

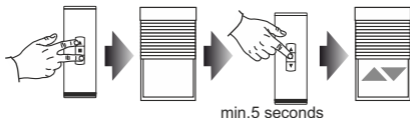
5. DELETING A SELECTED CHANNEL/ TRANSMITTER FROM THE EX-BIDI CONTROLLER MEMORY:

1. Ensure access to the front panel of the controller.
2. Press the PROG button on the controller for a minimum of 5 seconds - the STATUS diode will light up yellow and then go off.
3. Press the STOP button on the existing channel of the selected transmitter - the roller shutter will confirm it with a short DOWN/UP movement.
4. The settings of the given transmitter have been deleted from the EX-BIDI controller memory.



6. PROGRAMMING OF THE INTERMEDIATE POSITION WITH PX-BIDI / NX-BIDI REMOTES:

1. Use the UP/STOP/DOWN buttons to set the roller shutter in the required intermediate position.
2. Press the STOP button for min. 5 seconds to remember the intermediate position - the roller shutter will confirm it with a short UP/DOWN movement.



7. ACTIVATION OF THE INTERMEDIATE POSITION WITH PX-BIDI / NX-BIDI REMOTES:

1. Press the STOP button once when the roller shutter is stopped in any position.
2. The roller shutter will move to a previously programmed intermediate position.



8. DELETING THE INTERMEDIATE POSITION WITH PX-BIDI / NX-BIDI REMOTES:

1. Use the STOP button to set the roller shutter in the existing intermediate position.
2. Press the STOP button for min. 5 seconds to delete the existing intermediate position, the roller shutter will confirm it with a short UP/DOWN movement.

