



**PORTOS TR7**  
spółka z ograniczoną odpowiedzialnością  
spółka komandytowa  
ul. Złota 71  
62 - 800 Kalisz  
tel. 62 / 768 40 00  
sekretariat@portosrolety.pl  
www.portosrolety.pl

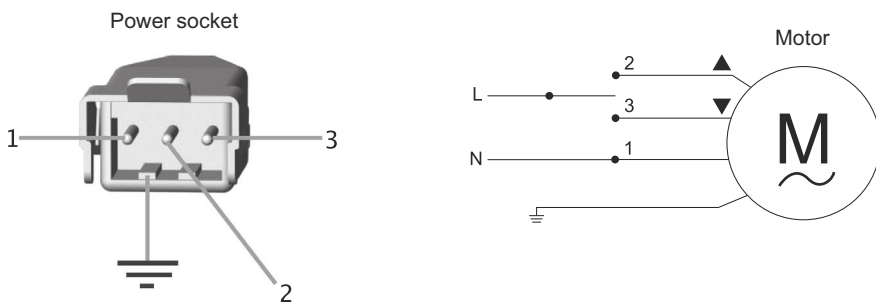
# User's manual of an **A-OK** motor



## 1. Connection scheme:

- Connection scheme of the radio controlled motor and a switch

L =	Phase	1 =	N Neutral/ blue
N =	Neutral	2 =	Top/ black
⊕ =	Protective conductor	3 =	Bottom/ brown
		⊕ =	Protective conductor / yellow and green

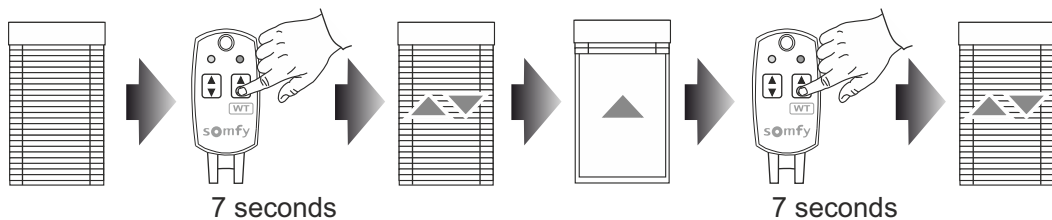


If the motor directions are reversed, the location of the black and brown wires shall be respectively changed.

## 2. Configuring the end-limit switch positions:

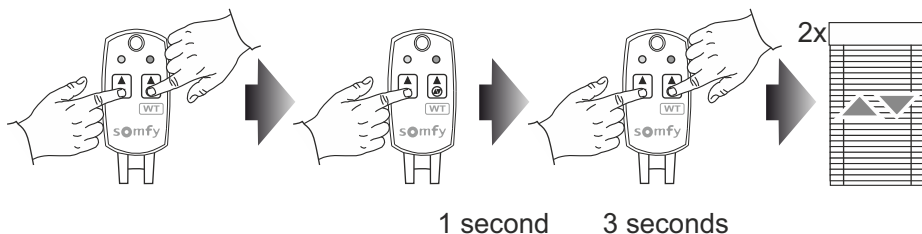
**Note!** Configuration shall always start with the bottom end-limit switch position!

1. Set the motor in the position to be configured as the bottom end-limit switch position.
2. On the somfy remote control, press and hold for about 7 seconds the WT button - the UP/DOWN motor movement will confirm successful performance of the operation.
3. Open the roller shutter up to the position to be configured as the upper end-limit switch position.
4. On the somfy remote control, press and hold for about 7 seconds the WT button - the UP/DOWN motor movement will confirm successful performance of the operation.



### 3. Resetting the end-limit switch positions and the motor:

1. On the somfy remote control, simultaneously press the WT and DOWN buttons.
2. Release the WT button, pressing and holding the DOWN button.
3. After one 1 second, press and hold the WT button again and press and hold for about 3 seconds both buttons - the double UP/DOWN motor movement will confirm successful performance of the operation.





**WARNING - FOR THE SAFETY OF PEOPLE, IT IS IMPORTANT TO  
FOLLOW THESE USER'S INTRUCTIONS.  
KEEP THESE USER'S MANUAL AT ALL TIMES.**



**PORTOS TR7**

**spółka z ograniczoną odpowiedzialnością s. k.**

ul. Złota 71

62-800 Kalisz

tel 62 768 40 11

E-mail: [sekretariat@portosrolety.pl](mailto:sekretariat@portosrolety.pl)

[www.portosrolety.pl](http://www.portosrolety.pl)