



## PORTOS TR7

spółka z ograniczoną odpowiedzialnością  
spółka komandytowa  
ul. Złota 71, 62 - 800 Kalisz  
tel. 62 / 768 40 00  
sekretariat@portosrolety.pl  
www.portosrolety.pl

# PORTOS drive control system OWNER'S MANUAL PPKR-313/2

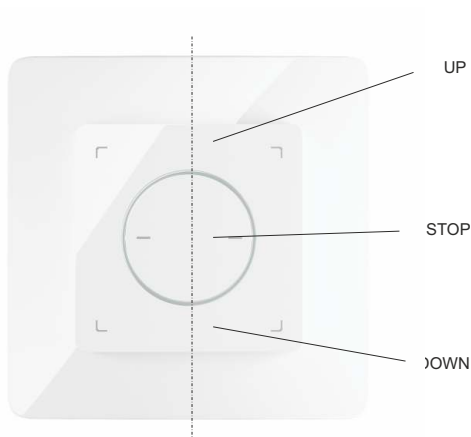


## Technical specifications :

|                        |  |
|------------------------|--|
| Power supply:          | 230V 50 Hz                                     |
| Operating frequency:   | 433,92 MHz                                     |
| Operating temperature: | between -10°C and +50°C                        |
| Protection class:      | IP44   |
| Operating range:       | 150 m in an open area<br>25 m inside buildings |
| Transmission power:    | ERP<10 mW                                      |



## Device characteristics:



## PPKR-313/2

Radio equipment operating at 433 MHz  
may cause reception interference.  
The range of the radio signal is  
architecturally and statutorily limited.

# 1. Switching between support and no support modes

The switch can be operated in two modes:

## **Support mode**

Pressing and releasing the UP or DOWN button activates the programmed motor function (opening or closing the roller shutter). The motor will run until it completely closes or opens the roller shutter.

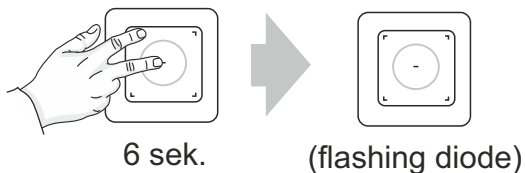
## **No support mode**

The motor will work only when we keep the button pressed. Releasing the button causes the motor to stop working. If the button is held for more than 2 seconds, the motor will start to operate in the same way as in the support mode, that is, until the roller shutter is fully closed or opened.

Switching between individual modes is performed in the following way:

1. For the selected drive, press the UP + STOP buttons simultaneously for 6 seconds - the LED on the switch will light up.
2. After 6 seconds, release the buttons - the LED will start flashing and will go off.

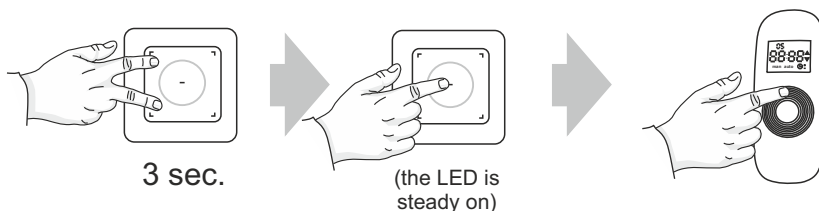
Setting of the operating mode of the selected drive has been changed.



## 2. Assigning a remote.

To assign a given remote / transmitter to the PPKR-313/2 receiver, perform the following actions:

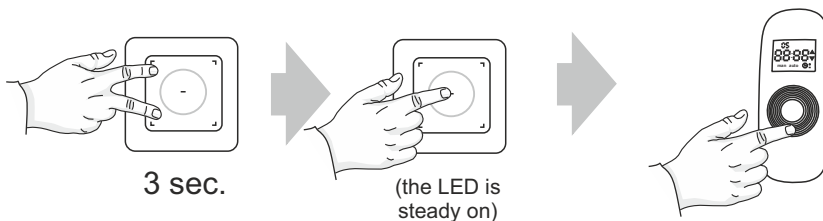
1. On the selected switch, press the UP + DOWN buttons and hold them for 3 seconds (the LED starts flashing).
2. On the switch, press the STOP button (the LED is steady on).
3. On any remote / transmitter, press the UP button (the LED goes off).



## 3. Remote removal.

To remove a given remote/transmitter from the PPKR-313/2 receiver, perform the following actions:

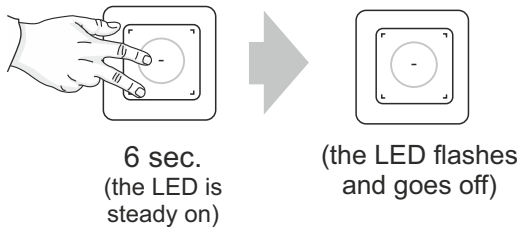
1. On the switch, press the UP + DOWN buttons and hold them for 3 seconds (the LED starts flashing).
2. On the switch, press the STOP button (the LED is steady on).
3. On any remote / transmitter, press the DOWN button (the LED goes off).



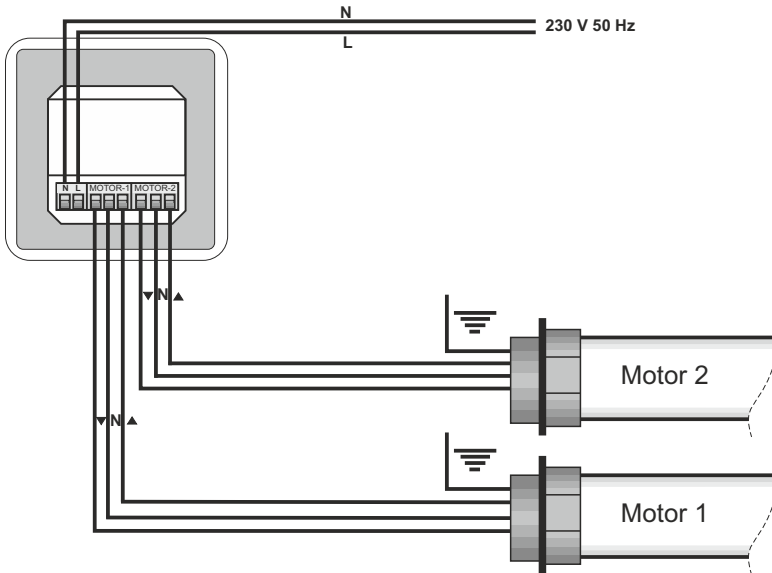
## 4. Removing all assigned remotes/transmitters.

In order to remove all assigned remotes/transmitters from the PPKR-313/2 receiver, perform the following actions:

1. On the switch, press the DOWN + STOP buttons and hold them for 6 seconds (the LED is steady on).
2. After 6 seconds, the LED starts flashing and goes off.
3. All assigned remotes/transmitters are removed.



## 5. Connection diagrams



**CAUTION** - do not install PPKR 313/2 switches in the immediate vicinity  
– the minimum distance is 20 cm.