



PORTOS TR7
spółka z ograniczoną odpowiedzialnością
spółka komandytowa
ul. Złota 71
62 - 800 Kalisz
tel. 62 / 768 40 00
sekretariat@portosrolety.pl
www.portosrolety.pl

INSTRUCTION MANUAL

RR1 / RR5 / RR15

Transmitters operate
on frequency
433 Mhz

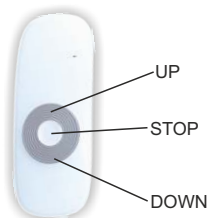


Specification :

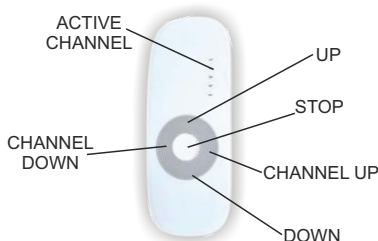
Nominal voltage:	3V
Battery type:	CR 2430
Radio frequency:	433 Mhz
Transmit power:	10 mW
Ambient temperature:	from -10 °C to +50 °C
Operating range:	150 m outside buildings 25 m indoors



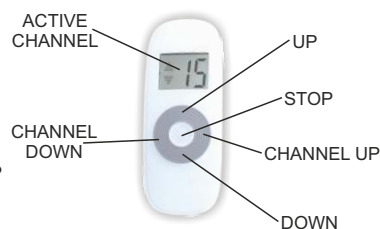
Characteristics of the device:



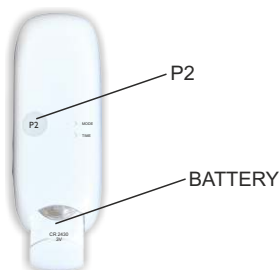
RR 1



RR 5



RR 15



Programming a radio drive on a specific channel of any transmitter



IMPORTANT!!!

During any radio drive programming operations, only the programmed drive should be connected to power supply.

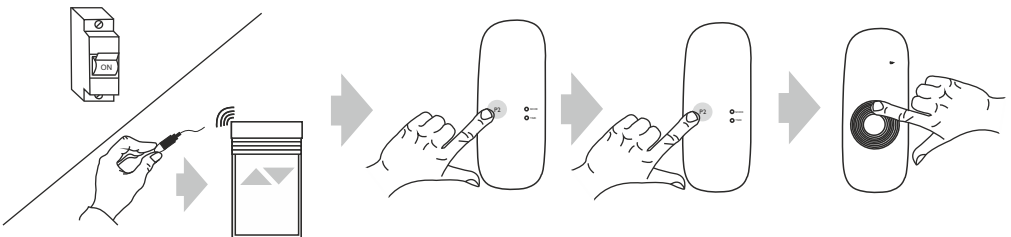
Multi-channel remote controls are provided with one additional channel which automatically saves all programmed devices. This channel is not programmable.

Programming the drive in the below presented manner will remove all previously programmed transmitters. To add another transmitter or channel, see point 5.

New models of the drive (motor) (dating from the middle of 2023) come with changed signalling. Response of the drive (motor) is herein divided into that characteristic of the previous and new drive model. The procedure of programming has not changed but for certain waiting times.

The drive (motor) does not respond to commands during the approval process.

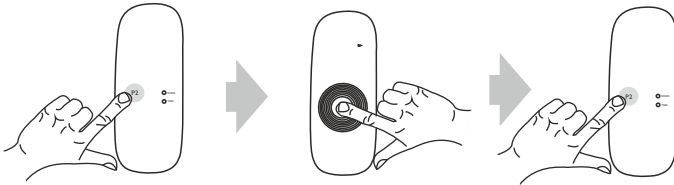
	OPERATION	RESPONSE OF THE DRIVE (MOTOR) (previous model)	RESPONSE OF THE DRIVE (MOTOR) (new model)
1.	Using the channel + / - buttons, select the channel you want to program.		
2a.	Switch on the programming mode by connecting the drive to power supply. Once connected to power, the drive will respond, the user will then have about 5 seconds for completion of instructions explained in the next point.	1 x long audio signal 1 x up-down movement confirmation	The drive (motor) not paired with any remote control: 1 x long audio signal 1 x up-down movement confirmation. The drive (motor) paired with a remote control: 3 x audio signals.
2b.	Switch on the programming mode by pressing the microswitch button for not longer than 3 seconds (new model) or until you hear an audio signal (previous model).	After the lapse of 3 seconds: 1 x audio signal 1 x up-down movement confirmation	Once the button is released: 1 x audio signal 1 x up-down movement confirmation
3.	Press P2 button on the remote control.	1 x audio signal	1 x audio signal 1 x up-down movement confirmation
4.	Press P2 button on the remote control again.	1 x audio signal	1 x audio signal 1 x up-down movement confirmation
5.	Press the "Up" button or "Down" button on the remote control. The "Down" button if used will reverse the directions after programming.	6 x short audio signal 1 x up-down movement confirmation	3 x audio signals 1 x up-down movement confirmation



Deleting a channel

Set the channel that You wish to delete.

1. Press P2 button, the motor will emit a single sound and will vibrate.
2. Press the STOP button. The motor will only emit a single sound.
3. Press again P2 button. The deleting procedure will be confirmed by 4 short beeps and after that the motor will vibrate, meaning that the deleting was successful.



CAUTION !!!

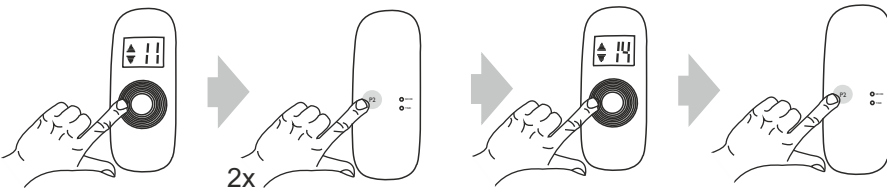
If the settings of one channel will be deleted then all the motors that have been programmed on this channel will be deleted as well. Each deleting and further programming procedure requires the power to be switched on for each motor individually, that is why it is recommended that each motor has its own power supply separately assigned.

Adding another transmitter/channel

The procedure of adding a new transmitter/channel starts with the already working transmitter. When adding a new transmitter/channel the power supply does not need to be switched off and on again.

Set the channel that You want to add on a new transmitter.

1. Press P2 button on the already existing transmitter, the motor will emit a single sound and will vibrate.
2. Press the P2 button again. The motor will only emit a single sound.
3. Now select the transmitter/channel on the new device and press P2 button (or Up + STOP buttons simultaneously, depending on the transmitter). The motor confirms by beeping 5 times. The new channel/transmitter is programmed.



4. Switching the remote control between the switch and pushbutton mode

The remote control can be operated in two modes:

Switch mode

By pressing and releasing the UP or DOWN button, the previously programmed function of a motor will be activated (opening or closing the roller shutter). The motor will work only when the button is being pressed. Releasing the key will stop the motor. After pressing the button for longer than 2 seconds the motor will enter the switch mode, that is, it will work until the roller shutter is completely closed or opened.

Pushbutton mode

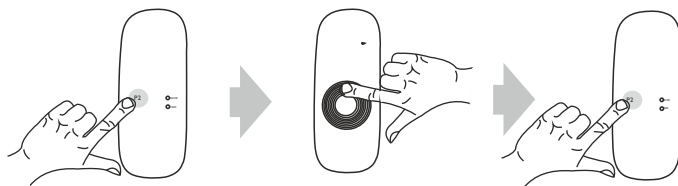
By pressing and releasing the UP or DOWN button, the previously programmed function of a motor will be activated (opening or closing the roller shutter). The motor will work only when the button is being pressed. Releasing the key will stop the motor. After pressing the button for longer than 2 seconds the motor will enter the switch mode, that is, it will work until the roller shutter is completely closed or opened.

Switching between particular modes can be performed in the following way:

Choose the channel which has been previously programmed.

1. Press the P2 button once, the motor will emit a single sound.
2. Press the UP button, the motor will emit a single sound.
3. Press the P2 button again, it will be signaled by 3 sounds emitted by the motor

The shift of the mode on the remote control has been completed. This change relates to all channels and remote controls that are going to be assigned to the motor.



Operating

The remote control's range as well as the quality of radio signal can be influenced by local interferences such as motors or other radio devices operating in the same frequency. If there is no reaction of the motor when using the remote control, you should send a command again after moving the remote control to another area of the room. Device must be kept clean and protected from dirt. The device should not be exposed to extreme temperature, moisture or vibrations. To change the battery you should take out the device from the frame. The battery is located at the back of the device. While changing the battery you should not use any metal tools. Only batteries CR2430 can be used. After replacing the battery with the new one, the device is ready to work. The controlling device should be protected from access of undesirable persons. Before throwing away the device, remember to delete all motors assigned to it. The device that is no longer needed, should be disposed of in accordance with the rules and regulations of the country you inhabit.



CAUTION – PROCEEDINGS ACCORDING THIS MANUAL IS IMPORTANT FOR THE SAFETY OF PEOPLE.