



PORTOS TR7
spółka z ograniczoną odpowiedzialnością
ul. Złota 71, 62 - 800 Kalisz
tel. 62 / 768 40 00
sekretariat@portosrolety.pl
www.portosrolety.pl

PORTOS Drive control system

USER MANUAL OF SPRN-1+ TRANSMITTER



Technical data :

Power supply:

Operating frequency:

Transmission power:

Operating temperature:

Operating range:

3V battery (CR 2430)

433 MHz

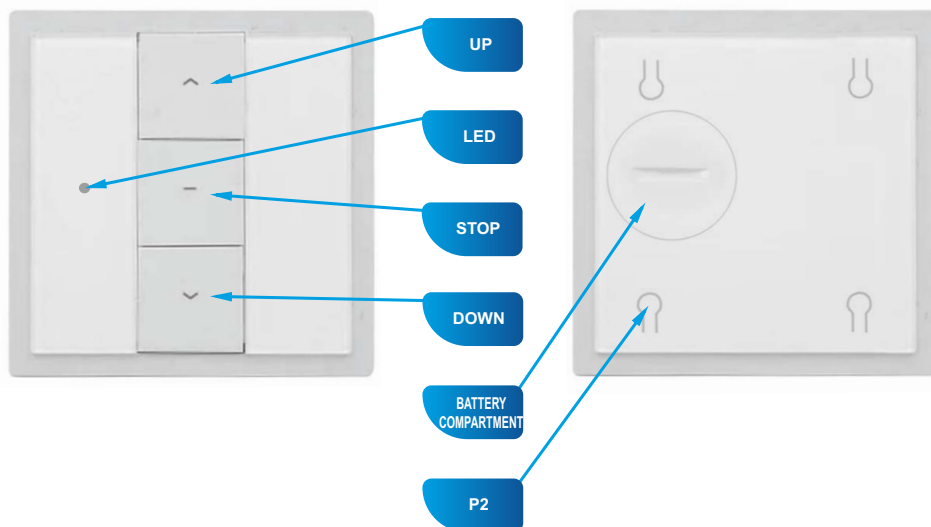
<10 mW

from -10 °C to +50 °C

Determined by the system architecture
and regulatory factors



Device specification:



SPRN-1+ wall-mounted
1-channel transmitter
for S-SOLAR solar drives

1. Device description



1. The battery can be accessed from the back of the device. The battery compartment can be unscrewed using a coin.
2. Battery useful life is approx. 1 year if the device processes approx. 4 commands a day on average.
3. Batteries should be replaced when the integrated LED light does not switch on, or when the transmitter stops reacting to command buttons.
4. When replacing batteries, pay attention to their proper polarization. Batteries can contain components that may cause health impairments or serious environment degradation. End of life batteries must be disposed to special containers.

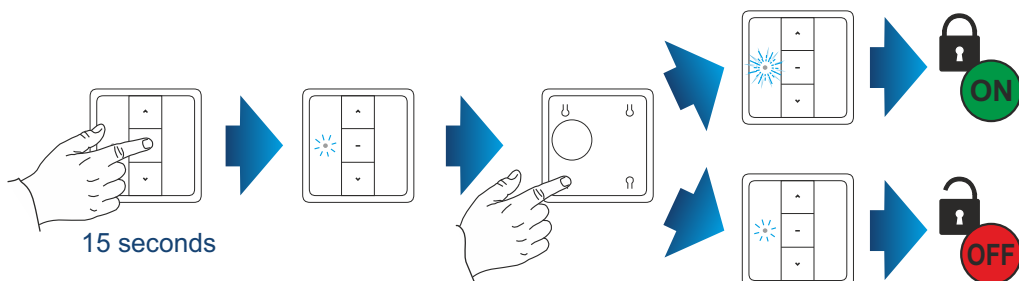
This product includes a battery. Swallowing a coin-cell battery may cause serious internal burns within 2 hours, which can be lethal.

Keep new and end of life batteries away from children. If the battery compartment does not close safely, refrain from using the product and keep it away from children. If you suspect that batteries could have been swallowed or got inserted in any part of the body, get medical help immediately.

2. Function button lock

Function button lock prevents a user from accidentally pressing two buttons when programming the drives or radio transmitters. This function is on by default. To switch this function on/off, follow the below procedure.

1. Press and hold the STOP button for 15 seconds.
 - If the LED light blinks, the lock function is off.
 - If the LED light is on continuously, the lock function is on.



3. Selection of the transmitter operation mode.

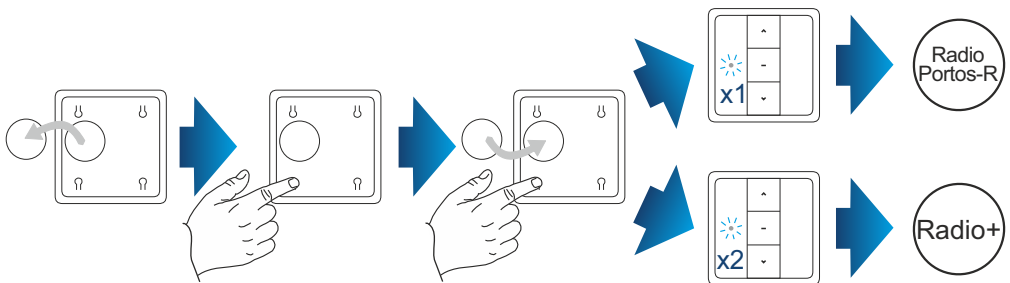
The transmitter can operate in one of the two modes:

- Radio+
- Radio Portos-R

By default, the transmitter operates in Radio+ mode.

To change the mode:

1. Take the battery out of the transmitter.
2. Press the P2 programming button.
3. Holding the P2 programming button, insert the battery.
 - If the LED light blinks once, the transmitter is in the Radio Portos-R mode
 - If the LED light blinks twice, the transmitter is in the Radio+ mode



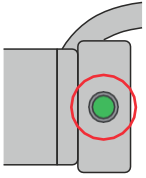
4. Programming the first transmitter for S-SOLAR drives

Transmitter is programmed according to the type of receiver. When programming, follow the user manual of the device to be controlled by the transmitter.

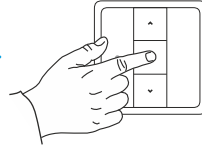
An interval longer than 6 seconds between subsequent button presses will result in an automatic exit from the programming mode and the changes will not be saved.

If the end positions are not set, programming of the first transmitter will delete the previously programmed transmitters from the device memory.

1. Press the programming button on the transmitter head and hold it for 2 seconds - the drive will confirm the pairing with a short UP/DOWN movement of the shutter curtain profile and a short single audio signal.
2. Press the STOP button on the transmitter and hold it for 2 seconds - the drive will confirm the pairing with several short audio signals and two short UP/DOWN movements of the shutter curtain profile.



2 seconds



2 seconds



x2