



PORTOS TR7
spółka z ograniczoną odpowiedzialnością
ul. Złota 71, 62 - 800 Kalisz
tel. 62 / 768 40 00
sekretariat@portosrolety.pl
www.portosrolety.pl

PORTOS Drive control system

USER MANUAL OF **SRR-15+** remote controls

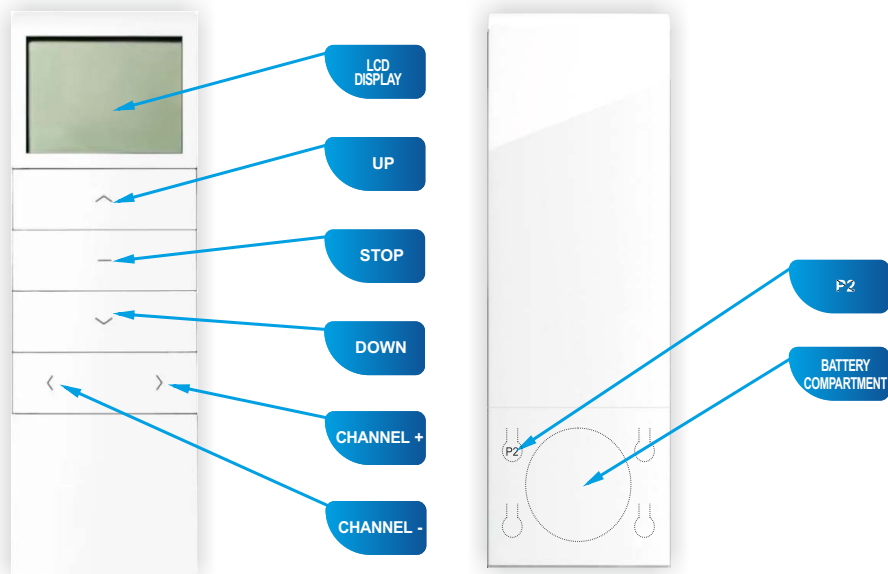


Technical data :

Power supply:	3V battery (CR 2450)
Operating frequency:	433 MHz
Transmission power:	<10 mW
Operating temperature:	from -10 °C to +50 °C
Operating range:	Determined by the system architecture and regulatory factors



Device specification:



SRR-15+ 15-channel transmitter for S-SOLAR solar drives

1. Device description



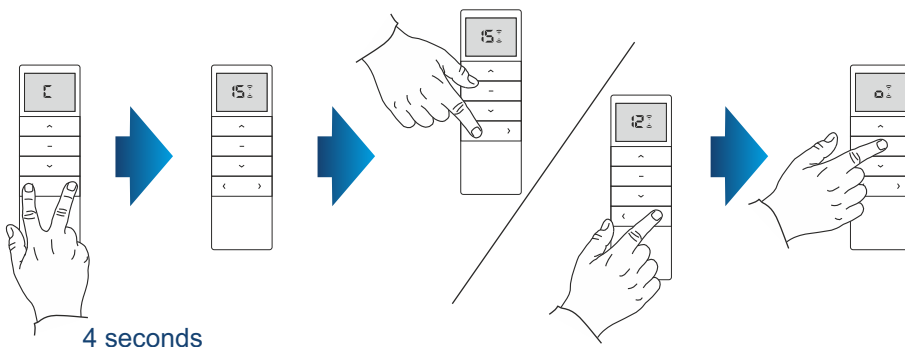
1. To access the battery and the programming button, slide down the back cover of the remote control.
2. Battery useful life is approx. 1 year if the device processes approx. 4 commands a day on average..
3. Batteries should be replaced when the transmitter stops reacting to command buttons.
4. When replacing the batteries, pay attention to their proper polarization. Batteries can contain components that may cause health impairments or serious environment degradation. End of life batteries must be disposed to special containers.

This product includes a battery. Swallowing a coin-cell battery may cause serious internal burns within 2 hours, which can be lethal. Keep new and end of life batteries away from children. If the battery compartment does not close safely, refrain from using the product and keep it away from children. If you suspect that batteries could have been swallowed or got inserted in any part of the body, get medical help immediately.

2. Selection of active channels

Press the UP or DOWN buttons to exit from the selection mode of active channels. To change the quantity of active channels again, follow the procedure described below.

1. Simultaneously press and hold the CHANNEL+ and CHANNEL- buttons. The display will show the "C" symbol, next after approx. 4 seconds, the display will show "15" and up and down arrows.
2. Use the CHANNEL+ or CHANNEL- buttons to set the quantity of displayed channels.
3. Press the STOP button to confirm the setting. The display will show the "o" symbol.

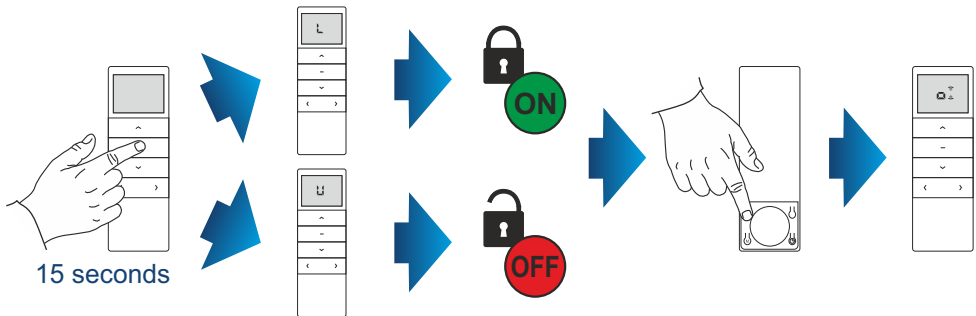


3. Function button lock.

Function button lock prevents a user from accidentally pressing two buttons at the same time when programming the drives or radio transmitters.

This function is on by default. To switch this function on/off, follow the below procedure.

1. Press and hold the STOP button for 15 seconds.
 - if the display shows the “L” symbol, the lock function is on
 - if the display shows the “U” symbol, the lock function is off
2. Press the P2 programming button to confirm the function button lock on/off mode. The display will show the “o” symbol.



4. Selection of the transmitter operation mode.

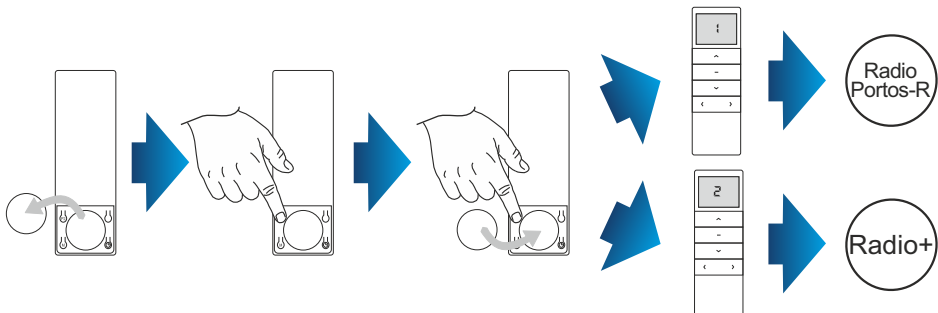
The transmitter can operate in one of the two modes:

- Radio+
- Radio Portos-R

By default, the transmitter operates in the Radio+ mode.

To change the mode:

1. Take the battery out of the transmitter.
2. Press the P2 programming button.
3. Holding the P2 programming button, insert the battery.
 - if the display shows “1”, the transmitter operates in the Radio Portos-R mode
 - if the display shows “2”, the transmitter operates in the Radio+ mode



5. Programming the first transmitter for S-SOLAR drives.

Transmitter is programmed according to the type of receiver. When programming, follow the user manual of the device to be controlled by the transmitter.

An interval longer than 6 seconds between subsequent button presses will result in an exit from the programming mode and the changes will not be saved.

If the end positions are not set, programming the first transmitter will delete the previously programmed transmitters from the device memory.

If the display shows the “0” channel, a group channel is on, which allows to simultaneously control all the shutters that are programmed on relevant channels. No programming procedures can be performed on this channel. A group channel is created automatically.

1. Press the programming button on the transmitter head and hold it for 3 seconds - the drive will confirm the pairing with a short UP/DOWN movement of the shutter curtain profile and a short single audio signal.
2. Press the STOP button on the transmitter and hold it for 3 seconds - the drive will confirm the pairing with several short audio signals and two short UP/DOWN movements of the shutters.

