



PORTOS TR7
spółka z ograniczoną odpowiedzialnością
ul. Złota 71, 62 - 800 Kalisz
tel. 62 / 768 40 00
sekretariat@portosrolety.pl
www.portosrolety.pl

PORTOS Drive control system

USER MANUAL OF **SRR-5T+** remote controls

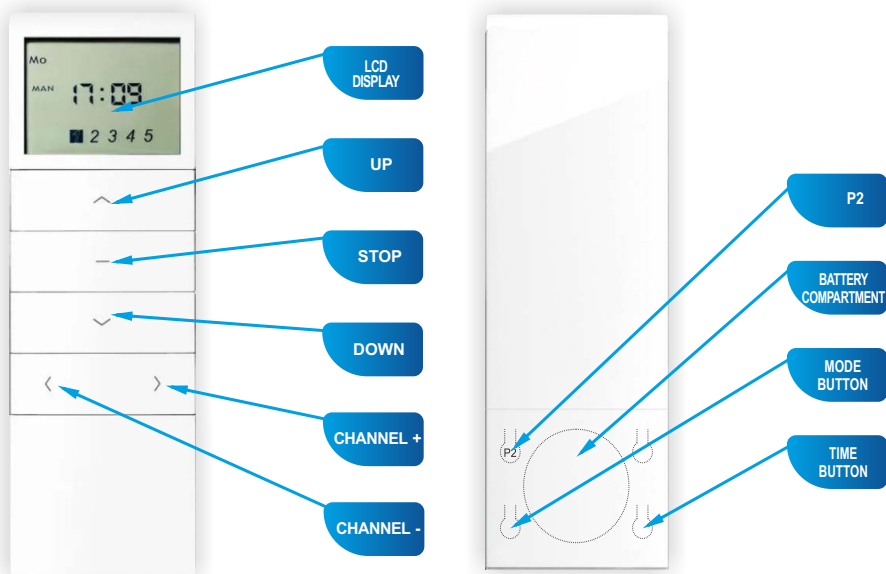


Technical data :

Power supply:	3V battery (CR 2450)
Operating frequency:	433 MHz
Transmission power:	<10 mW
Operating temperature:	from -10 °C to +50 °C
Operating range:	Determined by the system architecture and regulatory factors



Device specification:



SRR-5T+ 5-channel transmitter
with a timer for S-SOLAR solar drives

1. Device description.



1. A group channel must be activated so that the transmitter could control all receivers. A group channel is activated if all channels are lit up.
2. Select the group channel on the transmitter and set the auto mode so that the devices programmed on all the channels could work at the programmed time.
3. To access the battery and the programming button, slide down the back cover of the remote control.
4. Battery useful life is approx. 1 year if the device processes approx. 4 commands a day on average.
5. Batteries should be replaced when the transmitter stops reacting to command buttons.
6. When replacing batteries, pay attention to their proper polarization. Batteries can contain components that may cause health impairments or serious environment degradation. End of life batteries must be disposed to special containers.

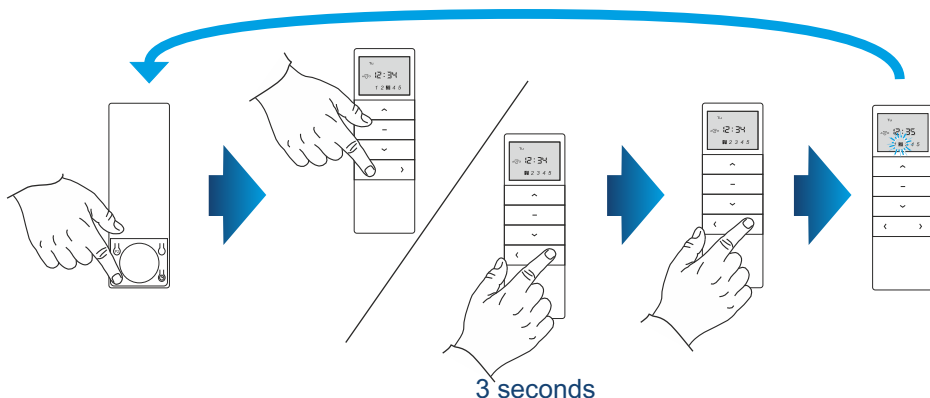
This product includes a battery. Swallowing a coin-cell battery may cause serious internal burns within 2 hours, which can be lethal.

Keep new and end of life batteries away from children. If the battery compartment does not close safely, refrain from using the product and keep it away from children. If you suspect that batteries could have been swallowed or got inserted in any part of the body, get medical help immediately.

2. Channel activation in the auto mode.

Each channel can be activated and deactivated in the auto mode. When the auto mode is switched off, the receivers in the selected channel will not react to time-programmed opening and closing. A channel is deactivated if the number it is assigned to blinks.

1. Press the OPERATION MODE button to set the auto mode.
2. Use the CHANNEL+ or CHANNEL- button to set the channel.
3. Press the CHANNEL+ button and hold it for 3 seconds.
4. If the number of selected channel blinks, the channel auto mode is deactivated. To activate the channel, follow the same steps again.



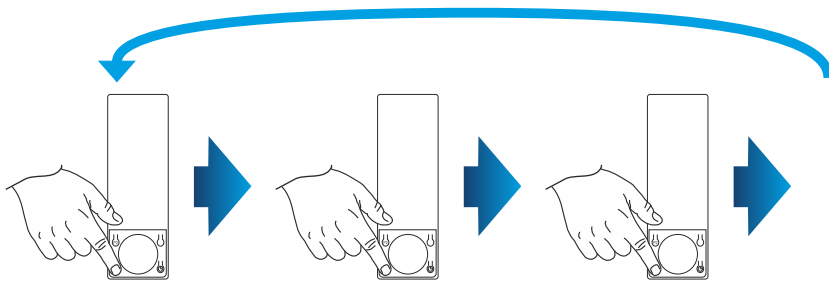
3. Change the mode.

Available modes:

- .Manual mode (the display shows the MAN symbol): ordinary mode, time-controlled function is off.
- .Auto mode (the display shows the AUTO symbol): ordinary mode, time-controlled function is on.
- .Random mode (the display shows the AUTO symbol with a shield: time control is switched on within the range of ± 15 minutes from the set auto time.

The operation mode changes for all channels.

1. Press the OPERATION MODE button to set the manual mode.
 2. Press the OPERATION MODE button to set the auto mode.
 3. Press the OPERATION MODE button to set the random mode.
- To switch between the modes, subsequently press the button.

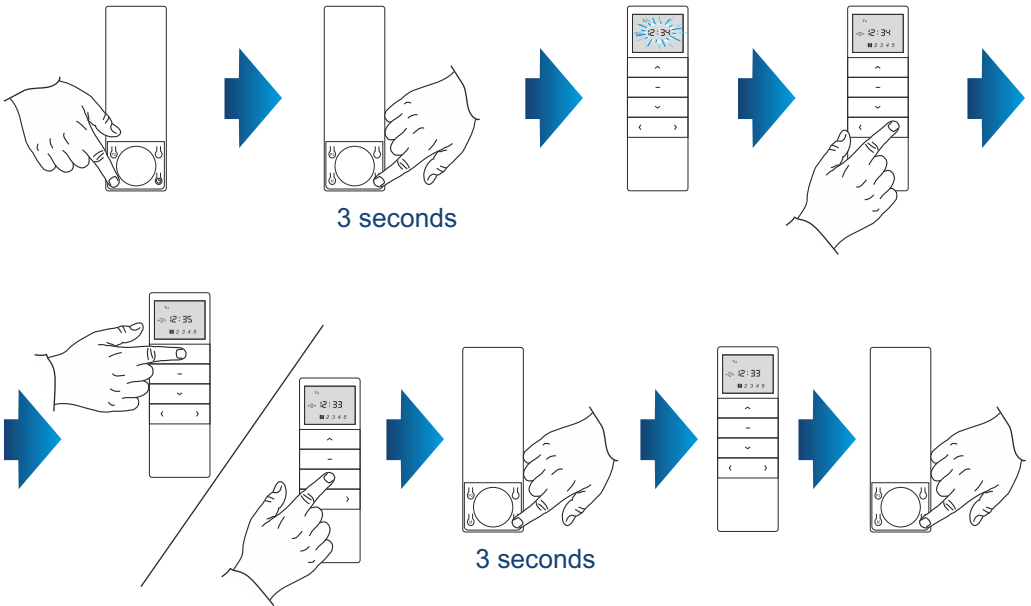


4. Current time set up.

Time can be set only in the manual mode.

An interval longer than 60 seconds between subsequent button presses will result in an automatic exit from the programming mode and the changes will not be saved.

1. Press the OPERATION MODE button to set the manual mode.
2. Press the TIME button and hold it for 3 seconds. The current time will blink on the display.
3. Press the CHANNEL+ button to select the change of hours, minutes or weekdays.
4. Use the UP or DOWN buttons to set the right selection.
5. Press and hold the TIME button for 3 seconds to confirm the changes (the time on the display will stop blinking).
6. Press the TIME button to start the clock.



5. Automatic opening and closing time set up.



Time can be set only in the manual mode.

The opening and closing time can be changed only in the auto mode.

Time-controlled opening and closing must be set separately on each channel.

An interval longer than 60 seconds between subsequent button presses will result in an automatic exit from the programming mode.

A group channel must be activated so that the transmitter could control all receivers. This applies to all operation modes of the transmitter.

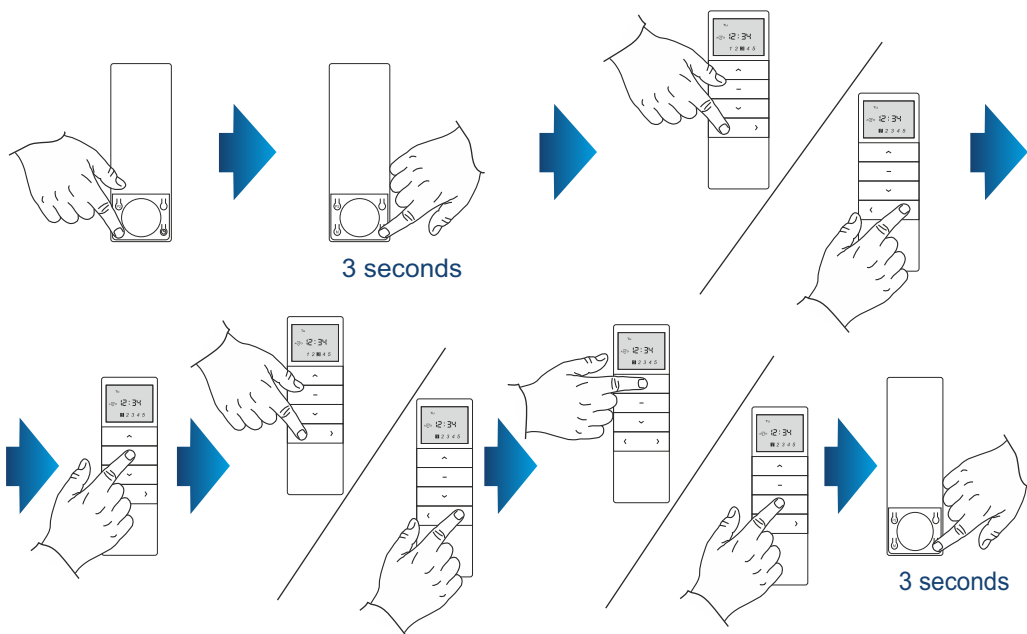
When setting the time of automatic opening and closing, symbol: “- - : - -” means that a given hour is not active in the auto mode.

Automatic (time-controlled) opening and closing can be set in one of the following three configurations:

- a)
- b) different hour for each day of the week (the Su symbol blinks)
- c) one hour from Monday to Friday and different hour from Saturday to Sunday (day symbols from Mo to Fr blink) the same hour for every day of the week (the symbols of all weekdays blink)

1. Press the OPERATION MODE button to set the auto mode.
2. Press the TIME button and hold it for 3 seconds. A given day of the week blinks on the display.
3. Use the CHANNEL+ or CHANNEL- buttons to change the option of auto time programming. Confirm the selection by pressing the STOP button.
4. Use the CHANNEL+ or CHANNEL- buttons to switch between the settings of hours and minutes of the opening and closing time and days of the week.

5. Use the UP or DOWN buttons to set the right selection.
6. Press the TIME button and hold it for 3 seconds to confirm the changes (the time on the display will stop blinking).

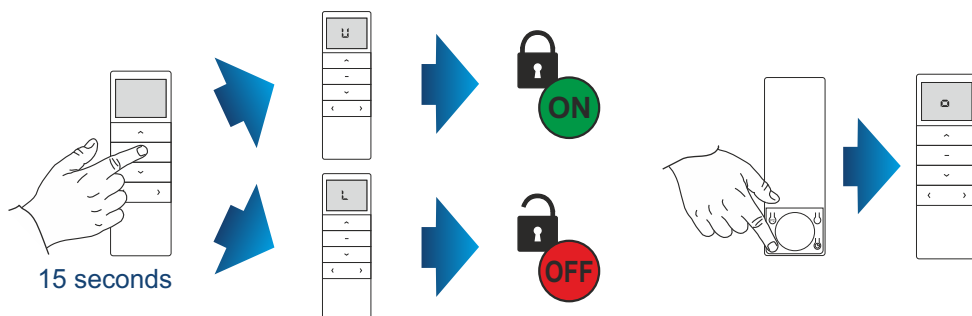


6. Function combination lock.

Function combination lock prevents a user from accidentally pressing two buttons at the same time, which prevents introduction of any unintended change of the drive or radio receiver settings.

This function is on by default. To switch this function on/off, follow the below procedure.

1. Press and hold the STOP button for 15 seconds.
 - if the display shows the "U" symbol, the lock function is currently on
 - if the display shows the "L" symbol, the lock function is currently off
2. Press the P2 button to change the setting - the display will show the "o" letter.



7. Selection of the transmitter operation mode.

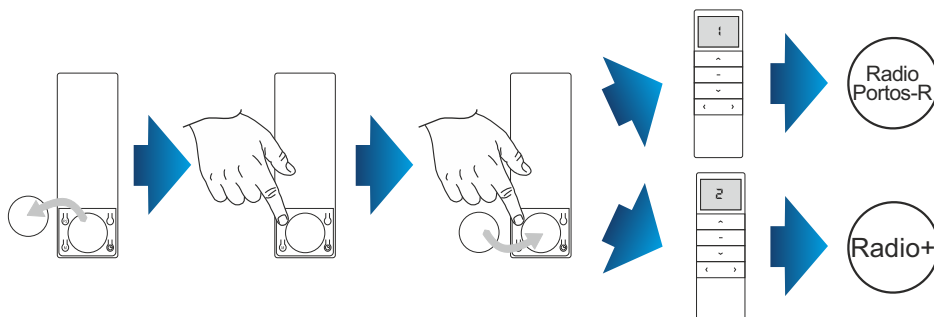
The transmitter can operate in one of the two modes:

- Radio+
- Radio Portos-R

By default, the transmitter operates in the Radio+ mode.

To change the mode:

1. Take the battery out of the transmitter.
2. Press the P2 programming button.
3. Holding the P2 programming button, insert the battery.
 - if the display shows "1", the transmitter operates in the Radio Portos-R mode
 - if the display shows "2", the transmitter operates in the Radio+ mode



8. Programming the first transmitter for S-SOLAR drives.

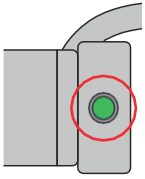
Transmitter is programmed according to the type of receiver. When programming, follow the user manual of the device to be controlled by the transmitter.

An interval longer than 6 seconds between subsequent button presses will result in an automatic exit from the programming mode and the changes will not be saved.

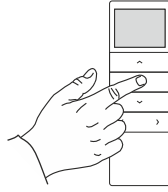
If the end positions are not set, programming the first transmitter will delete the previously programmed transmitters from the device memory.

If all channel numbers are selected on the display, a group channel is on, which allows to simultaneously control all the shutters that are programmed on relevant channels. Shutters cannot be programmed on this channel. A group channel is created automatically.

1. Press the programming button on the transmitter head and hold it for 2 seconds - the drive will confirm the pairing with a short UP/DOWN movement of the shutter curtain profile and a short single audio signal
2. Press the STOP button on the transmitter and hold it for 2 seconds - the drive will confirm the pairing with several short audio signals and two short UP/DOWN movements of the shutter curtain profile.



2 seconds



2 seconds



x2