



**PORTOS TR7**  
spółka z ograniczoną odpowiedzialnością  
spółka komandytowa  
ul. Złota 71  
62 - 800 Kalisz  
tel. 62 / 768 40 00  
sekretariat@portosrolety.pl  
www.portosrolety.pl

# User's manual of an A-OK receiver

The operating frequency  
of the receiver  
is 433MHz



Transmission power: ERP<10 mW

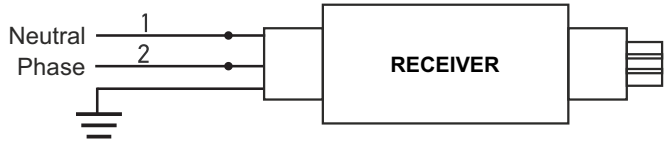
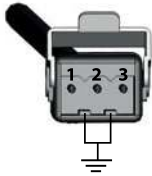


## 1. Connection scheme:

The receiver shall be connected to the Hirschmann plug socket (STAS 3) installed in the motor. On the other side of the receiver, the power cord ended with the Hirschmann plug (STAK 3) shall be connected as per the scheme.

Connection scheme of the radio receiver:

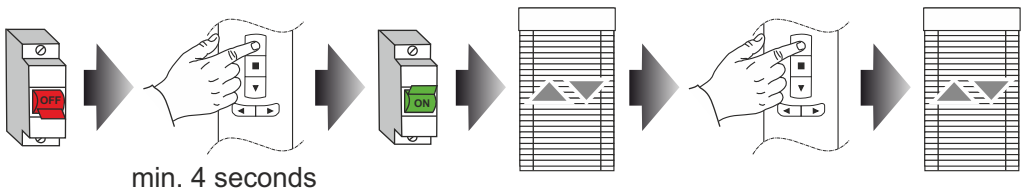
The receiver connector



Phase	2	Black
Neutral	1	Blue
Protection	⏚	Green and yellow

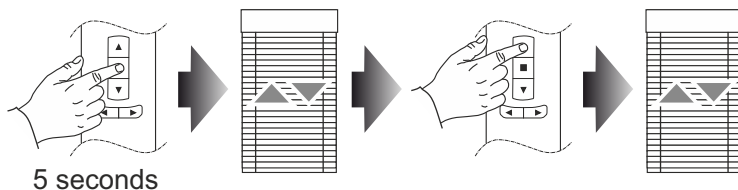
## 2. Configuration of the first remote control:

1. The receiver must be switched off.
2. On the remote control, select the channel that is to be assigned to the receiver.
3. Press and hold the 'up' button for 4 seconds at the minimum, until the diode in the remote control lights up permanently. Do not let go of the pressed button.
4. Holding the 'up' button pressed all the time, connect the receiver to power supply. The UP/DOWN motor movement indicates successful activation of the configuration mode. Let go of the pressed 'up' button.
5. Within several seconds, once again press the 'up' button. The receiver will be assigned to the remote control, the UP/DOWN motor movement will confirm successful performance of the operation.



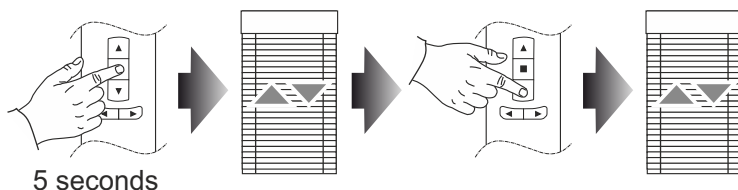
### 3. Configuration of another remote control/ channel duplication:

1. Press and hold the 'stop' button for 5 seconds on the already programmed remote control - the UP/DOWN motor movement will confirm successful performance of the operation.
2. On the new remote control/ another channel, press the 'up' button - the UP/DOWN motor movement will confirm successful performance of the operation.



### 4. Change the operating directions:

1. Press and hold the 'stop' button for 5 seconds - the UP/DOWN motor movement will confirm successful performance of the operation.
2. Press the 'down' button - the short UP/DOWN motor movement will confirm successful performance of the operation.



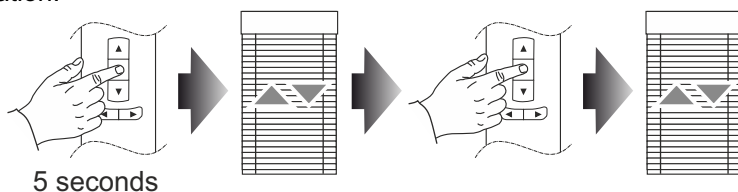
### 5. Change the operating mode:

The receiver may operate in two modes.

**Mode 1** - a short pressure of the direction button results in the movement until the end limit position of the motor.

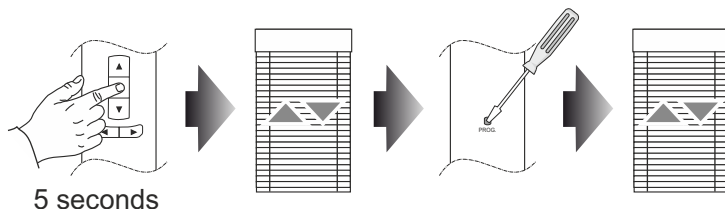
**Mode 2** - a short pressure of the direction button results in the minimum movement of the motor drive to adjust the angle of the louvers, whereas if the direction button is pressed for a longer time, the motor moves until the end limit position.

1. Press and hold the 'stop' button for 5 seconds - the UP/DOWN motor movement will confirm successful performance of the operation.
2. Press the 'down' button - the short UP/DOWN motor movement indicates successful configuration.



## 6. Resetting the programmed remote control:

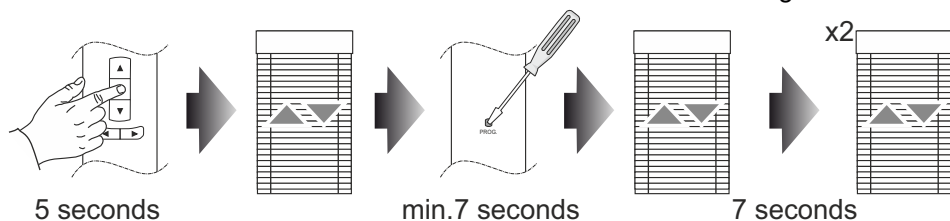
1. Press and hold the 'stop' button for 5 seconds on the already programmed remote control - the UP/DOWN motor movement will confirm successful performance of the operation.
2. Press the configuration button at the back of the remote control.



## 7. Motor resetting:

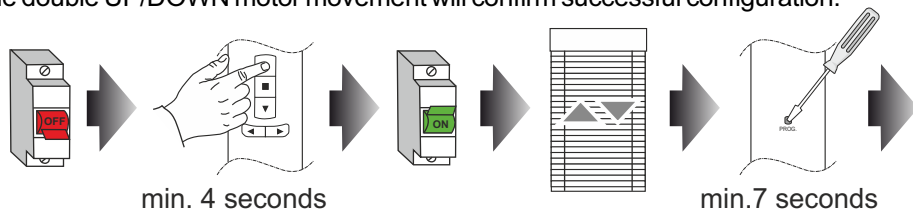
### Method 1:

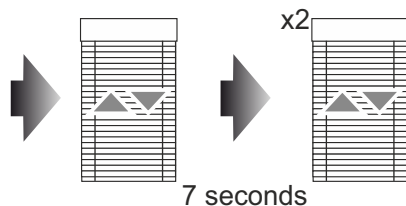
1. Press and hold the 'stop' button for 5 seconds on the already programmed remote control - the UP/DOWN motor movement will confirm successful performance of the operation.
2. Press and hold the 'configuration' button at the back of the remote control for over 7 seconds - once the button is pressed, the motor will move up/down, next after 7 seconds the double UP/DOWN motor movement will confirm successful configuration.



### Method 2:

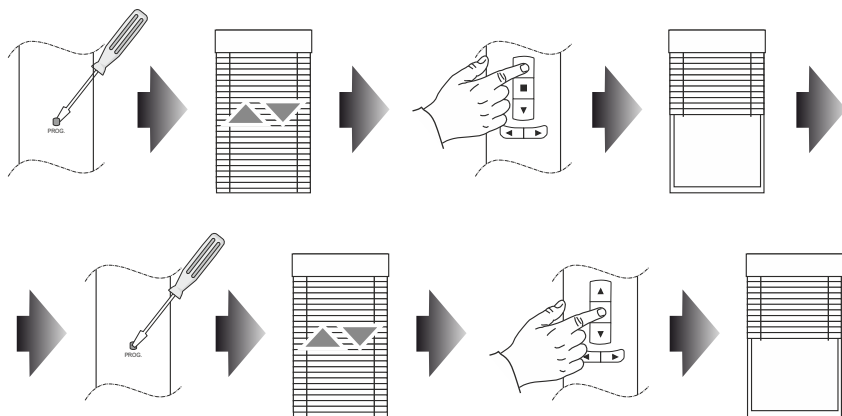
1. Switch off the power supply to the receiver.
2. Press and hold the 'up' button on any remote control for 4 seconds at the minimum, until the diode in the remote control lights up permanently. Do not let go of the pressed button.
3. Holding the 'up' button pressed all the time, connect the receiver to power supply. The UP/DOWN motor movement indicates successful activation of the configuration mode. Let go of the pressed 'up' button.
4. Press and hold the 'configuration' button at the back of the remote control for over 7 seconds - once the button is pressed, the motor will move up/down, next after 7 seconds the double UP/DOWN motor movement will confirm successful configuration.





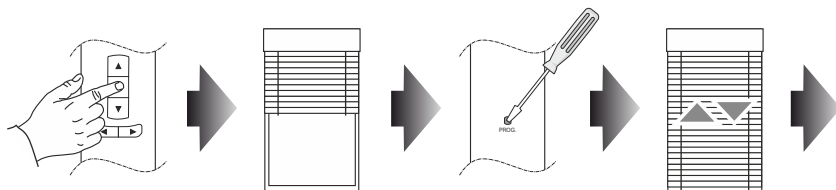
## 8. Setting the preferable position:

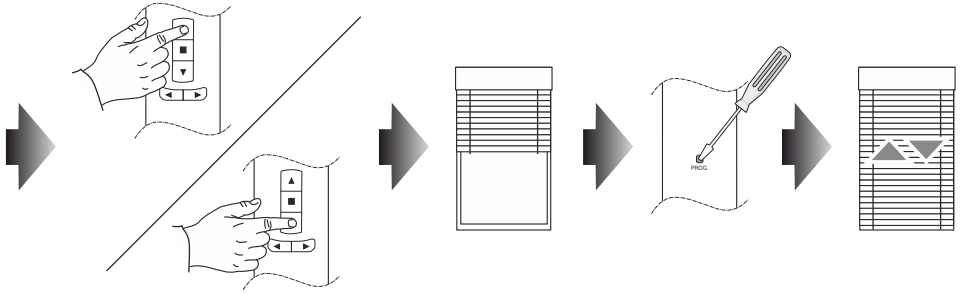
1. Press the 'configuration' button at the back of the remote control - the UP/DOWN motor movement will confirm successful performance of the operation.
2. Using the 'up' and 'down' buttons, set the preferable position of the roller shutter.
3. Press the 'configuration' button at the back of the remote control, autocalibration process will begin to precisely define the place of the preferable position.
4. To set the motor in the preferable position - press the 'stop' button when the roller shutter does not move.



## 9. Changing the preferable position:

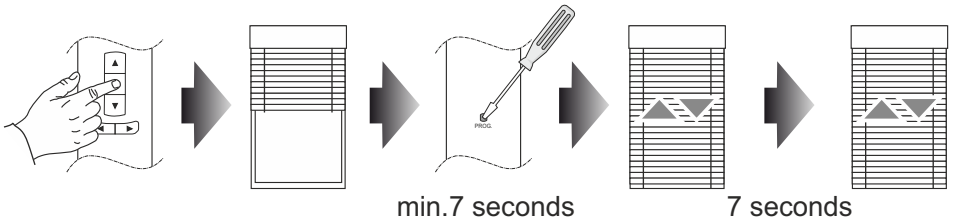
1. Press the 'stop' button so that the roller shutter moves to the preferable position.
2. Press the 'configuration' button at the back of the remote control - the UP/DOWN motor movement will confirm successful performance of the operation.
3. Using the 'up' and 'down' buttons, set the new preferable position of the roller shutter.
4. Press the 'configuration' button at the back of the remote control, autocalibration process will begin to precisely define the place of the preferable position.





## 10. Cancelling the preferable position:

1. Press the 'stop' button so that the roller shutter moves to the currently preferable position.
2. Press and hold the 'configuration' button at the back of the remote control for over 7 seconds - once the button is pressed, the motor will move up/down, next after 7 seconds another UP/DOWN motor movement will confirm successful cancellation of the preferable position.





**WARNING - FOR THE SAFETY OF PEOPLE, IT IS IMPORTANT TO  
FOLLOW THESE USER'S INTRUCTIONS.  
KEEP THESE USER'S MANUAL AT ALL TIMES.**



**PORTOS TR7**

spółka z ograniczoną odpowiedzialnością s. k.

ul. Złota 71

62-800 Kalisz

tel 62 768 40 11

E-mail: [sekretariat@portosrolety.pl](mailto:sekretariat@portosrolety.pl)

[www.portosrolety.pl](http://www.portosrolety.pl)