



PORTOS TR7
spółka z ograniczoną odpowiedzialnością
ul. Złota 71, 62 - 800 Kalisz
tel. 62 / 768 40 00
sekretariat@portosrolety.pl
www.portosrolety.pl

User manual of drives S-SOLAR 40/13RM S-SOLAR 60/20RM



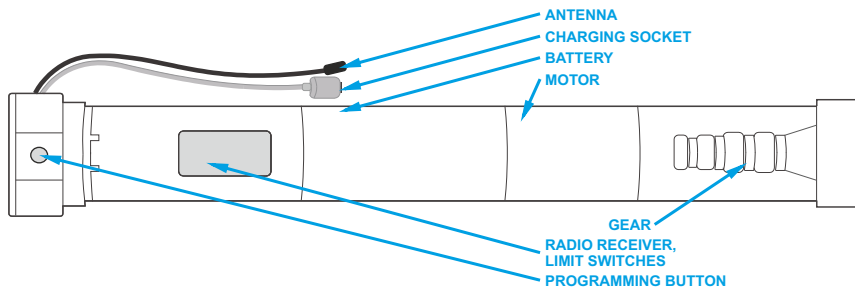
Technical data :

Power supply:	12V DC
Operating frequency:	433 MHz
Transmission power:	<10 mW
Operating temperature:	from -10 °C to +50 °C
Operating range:	Determined by the system architecture and regulatory factors
Receiver memory:	up to 10 transmitters



S-SOLAR type drives are the drives with a built-in radio transmitter, which allows the wireless operation with a remote control. They are intended for automated operation of external (front mounted) roller shutters. They are equipped with remote control programmable limit switches. A built-in battery allows the user to install a drive without any required connection to an external power supply. The S-SOLAR type drives are compatible with dedicated SRR and SPRN transmitters.

1. TECHNICAL DATA:



FUNCTIONS OF THE PROGRAMMING BUTTON:

Single button press	Drive control in the step mode
Pressing the programming button and holding it for 3 seconds (up to the first movement).	Programming a new transmitter or removing an already programmed transmitter.
Pressing the programming button and holding it for 7 seconds (up to the second movement).	Temporary radio control switch off (the programming button pressed again or interrupted power supply restores the radio control).
Pressing the programming button and holding it for 10 seconds (up to the third movement).	Reversing the directions of the drive operation.
Pressing the programming button and holding it for 16 seconds (up to the fourth movement).	Default settings reset (deletion of all programmed transmitters and settings).

2. SAFETY.

!!! Read this user manual before installation of the device and its use. The installer must follow the standards and regulations applicable in the country where the device is installed and must inform the users about the terms and conditions of use and maintenance of the device.

Failure to observe instructions of this user manual may pose health and life hazards and affect proper operation of the roller shutter as a whole. It will also entail the loss of warranty rights.

1. The torque of the drive should be properly adjusted to the weight of the roller shutter.
2. Pay attention not to damage the drive during transport, installation or use. Any vibrations of the drive should be limited to the minimum.
3. Any signs of wear and tear of the drive components must be inspected on a regular basis.
4. Any contact of the drive with fluids must be limited to the minimum.
5. When inserting the drive in the winding bar, no tools shall be used.
6. During installation of the lifter, pay attention not to damage the drive.
7. Make sure that children do not play with the drive and its control system. Mobile transmitters shall be kept away from children.

3. CHARGING:

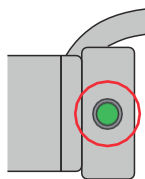


1. The drive is equipped with a built-in 12 V lithium-ion battery with an integrated charging module.
2. Maximum voltage and power of the charger: 12.6 V 1 A.
3. Before the motor is used for the first time, it shall be charged for approx. 6 hours.
4. During the operation, the motor will stop when the voltage drops below 8.00 V and will start working again when the voltage exceeds 8.5 V.
5. When the voltage drops below 7.0 V, the drive audio signal will get switched off. Audio signals will be activated when the voltage exceeds 7.5 V.
6. If the battery voltage drops below 10 V, the audio signals will be 10 times activated during the operation of the drive to notify the user about the low battery level.

4. PROGRAMMING THE FIRST TRANSMITTER.



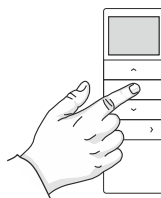
1. An interval longer than 10 seconds between the subsequent button presses will result in an automatic exit from the programming mode and the changes will not be saved.
 2. If the end positions are not set, programming the first transmitter will delete the previously programmed transmitters from the device memory.
1. Press the programming button on the transmitter head and hold it for 3 seconds.
 2. The roller shutter will make two short UP/DOWN movements and 3 short audio signals will be next generated.
 3. Press the STOP button on the remote control and hold it for 3 seconds.
 4. The roller shutter will make two short UP/DOWN movements. The drive will generate several short audio signals.



3 seconds



x2



3 seconds



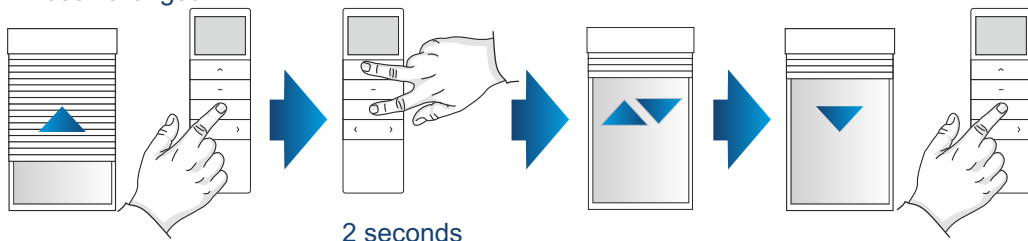
x2

5. DIRECTION CHANGE OF THE DRIVE OPERATION:

METHOD NO. 1:

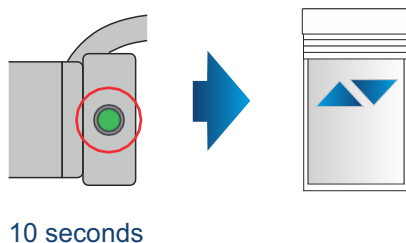
This method of changing the direction of the drive operation can be used only before the end positions have been programmed.

1. The DOWN button controls the roller shutter opening .
2. Press and hold the UP and DOWN buttons simultaneously for 2 seconds.
3. The roller shutter will make short UP/DOWN movements. The drive will generate an audio signal.
4. The DOWN button controls the roller shutter closing - the direction of the drive operation has been changed.



METHOD NO. 2:

1. Press and hold the programming button on the drive head for 10 seconds.
2. The roller shutter will make three short UP/DOWN movements. The drive will generate three audio signals.

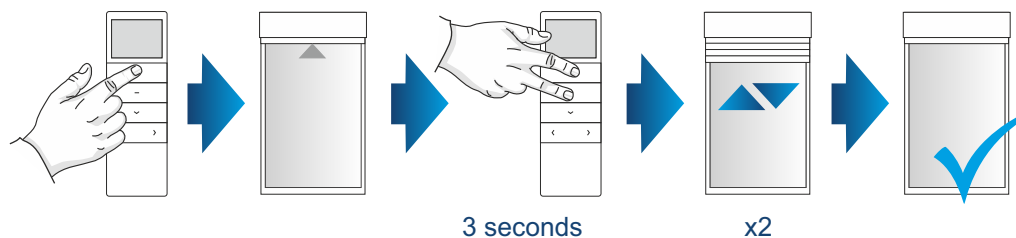


6. PROGRAMMING THE END POSITIONS.

!!! If the end positions are not set, the drive is in the pulse mode. If you hold the UP or DOWN button for more than 2 seconds, the drive will operate continuously. An interval longer than 2 minutes between subsequent button presses will result in an exit from the programming mode and the changes will not be saved.

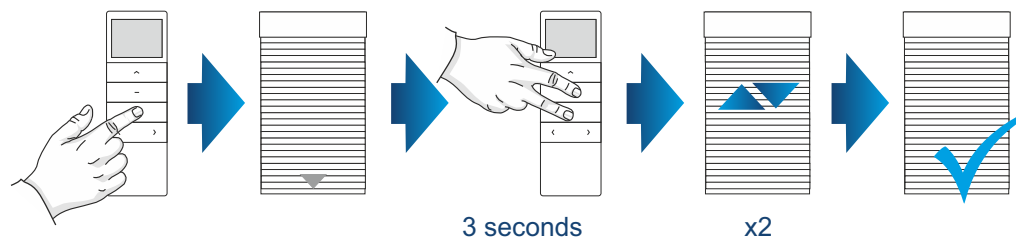
A. UPPER END POSITION:

1. Using the control buttons set the roller shutter in the position that is to be its upper end position.
2. Press and hold the UP and STOP buttons simultaneously for 3 seconds to confirm the upper end position.
3. The drive will make two short UP/DOWN movements and next 3 short audio signals will be generated. The upper end position has been set.



B. LOWER END POSITION:

1. Using the control buttons set the roller shutter in the position that is to be its lower end position.
2. Press and hold the DOWN and STOP buttons simultaneously for 3 seconds to confirm the lower end position.
3. The drive will make two short UP/DOWN movements and next 3 short audio signals will be generated. The lower end position has been set.



7. ADJUSTMENT OF END POSITIONS:

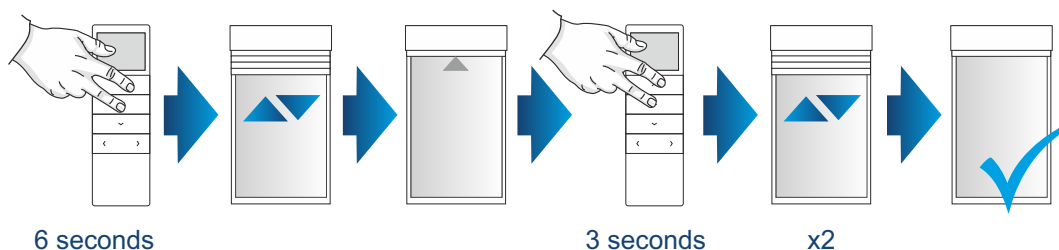


Even if the end positions are already set, the upper or lower end position can always be adjusted.

An interval longer than 2 minutes between the subsequent button presses will result in an automatic exit from the programming mode and the changes will not be saved.

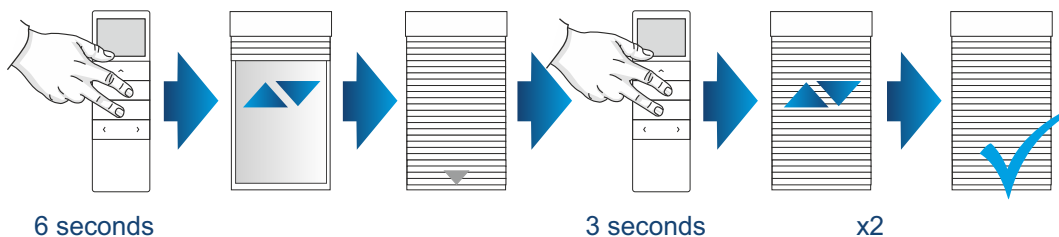
ADJUSTMENT OF THE UPPER END POSITION:

1. Press and hold the UP and STOP buttons simultaneously for 6 seconds.
2. The roller shutter will make short UP/DOWN movements. The drive will generate an audio signal.
3. Set a new upper end position.
4. Press and hold the UP and STOP buttons simultaneously for 3 seconds to confirm the new upper end position.
5. The roller shutter will make two short UP/DOWN movements. The drive will generate several short audio signals.
6. The upper end position has been changed.



ADJUSTMENT OF THE LOWER END POSITION:

1. Press and hold the DOWN and STOP buttons simultaneously for 6 seconds.
2. The roller shutter will make short UP/DOWN movements. The drive will generate an audio signal.
3. Set a new lower end position.
4. Press and hold the DOWN and STOP buttons simultaneously for 3 seconds to confirm a new lower end position.
5. The roller shutter will make two short UP/DOWN movements. The drive will generate several short audio signals.
6. The lower end position has been changed.



8. PROGRAMMING THE FAVOURITE POSITION:

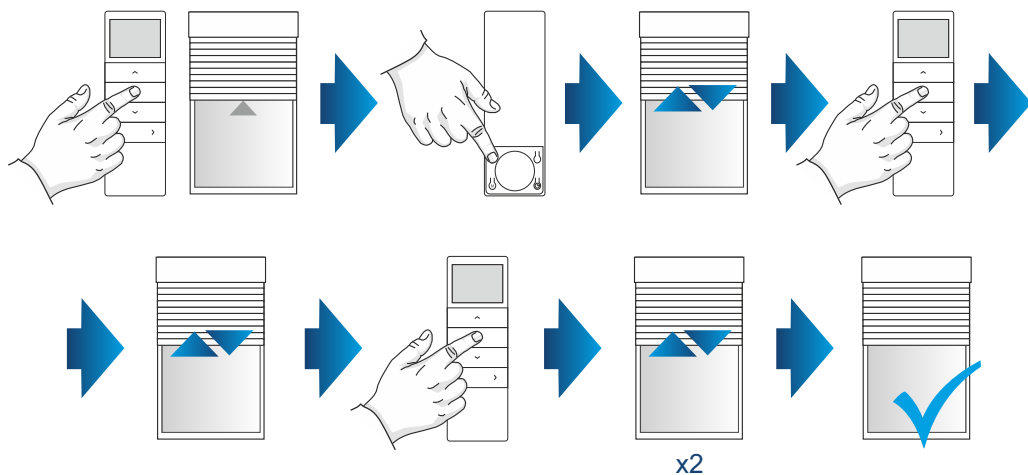


Once the upper and lower end positions are set, you can set the third position (the favourite position) in-between the two end positions.

Hold the STOP button for 3 seconds to set the third position.

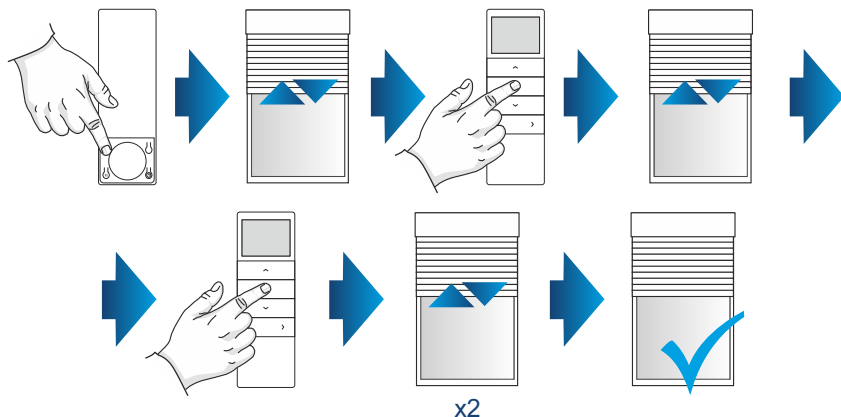
PROGRAMMING THE FAVOURITE POSITION:

1. The third position (the favourite position) can be set only after the upper and lower end positions have been set.
2. Press the P2 programming button.
3. The roller shutter will make short UP/DOWN movements. The drive will generate an audio signal.
4. Press the STOP button.
5. The roller shutter will make short UP/DOWN movements. The drive will generate an audio signal.
6. Press the STOP button.
7. The roller shutter will make two short UP/DOWN movements. The drive will generate several short audio signals.
8. The favourite position has been set.



9. DELETING THE FAVOURITE POSITION.

1. Press the P2 programming button.
2. The roller shutter will make a short UP/DOWN movement. The drive will generate an audio signal.
3. Press the STOP button.
4. The roller shutter will make short UP/DOWN movements. The drive will generate an audio signal.
5. Press the STOP button.
6. The roller shutter will make short UP/DOWN movements. The drive will generate an audio signal.
7. The favourite position has been deleted.



10. PROGRAMMING ANOTHER REMOTE CONTROL / CHANNEL COPYING.

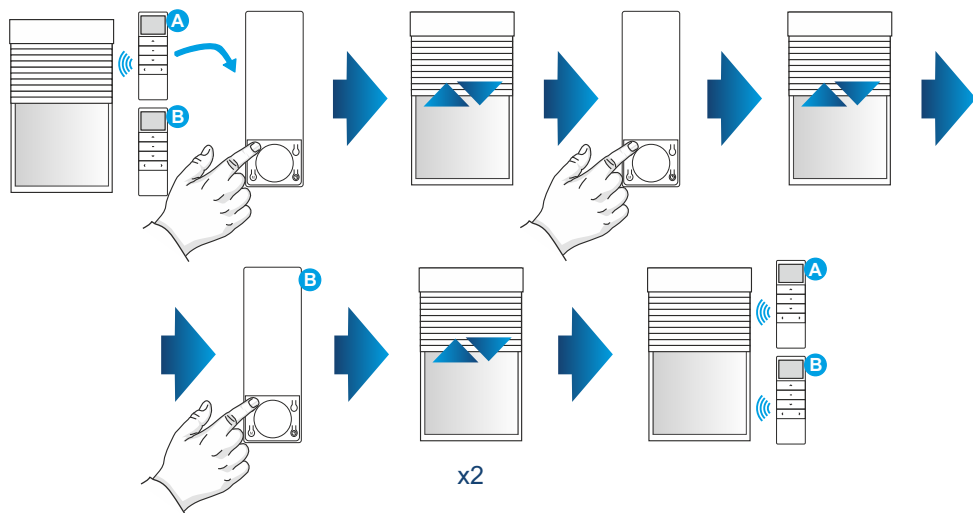
- !!!** A receiver can be controlled by 10 transmitters at the maximum. An interval longer than 10 seconds between subsequent button presses will result in an automatic exit from the programming mode and the changes will not be saved. A channel can be copied on the same remote control in order to create a group channel.

Remote Control A - already programmed remote control with a given roller shutter channel switched on.

Remote Control B - a not yet programmed channel on the same or another remote control.

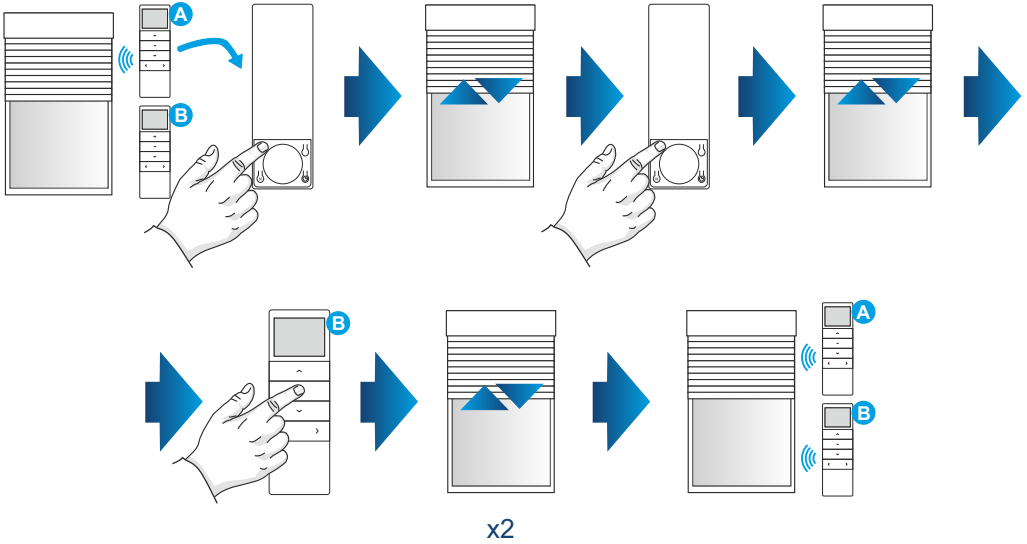
METHOD NO. 1:

1. Press the P2 programming button on the remote control A. The roller shutter will make short up/down movements. The drive will generate an audio signal.
2. Press the P2 programming button on the remote control A. The roller shutter will make short up/down movements. The drive will generate an audio signal.
3. Press the P2 programming button on the remote control B. The roller shutter will make two short up/down movements. The drive will generate several audio signals.



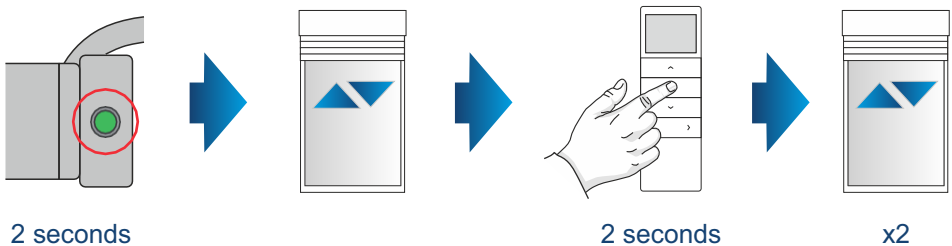
METHOD NO. 2:

1. Press the P2 programming button on the remote control A. The roller shutter will make short up/down movements. The drive will generate an audio signal.
2. Press the P2 programming button on the remote control A. The roller shutter will make short up/down movements. The drive will generate an audio signal.
3. Press and hold the STOP button for 2 seconds on the remote control B. The roller shutter will make two short up/down movements. The drive will generate several audio signals.



METHOD NO. 3:

1. Press and hold the programming button on the transmitter head for 2 seconds.
2. The roller shutter will make short UP/DOWN movements. The drive will generate an audio signal.
3. Press and hold the STOP button on the remote control for 2 seconds.
4. The roller shutter will make two short UP/DOWN movements. The drive will generate several audio signals.



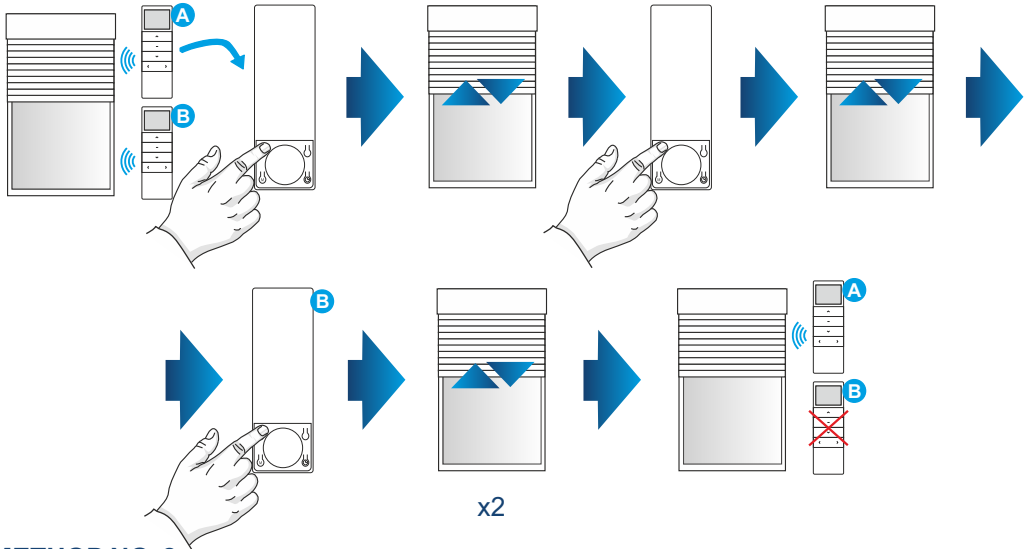
11. DELETION OF A CHANNEL / REMOTE CONTROL:

Remote Control A - a channel or remote control other than B from which a drive is to be deleted.

Remote Control B - a channel or remote control from which a drive is to be deleted.

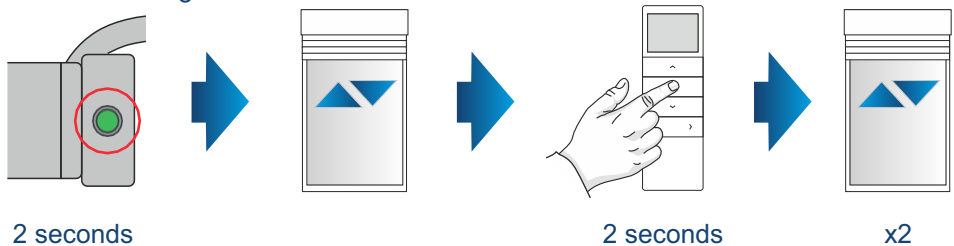
METHOD NO. 1:

1. Press the P2 programming button on the remote control A. The roller shutter will make short up/down movements. The drive will generate an audio signal.
2. Press the P2 programming button on the remote control A. The roller shutter will make short up/down movements. The drive will generate an audio signal.
3. Press the P2 programming button on the remote control B. The roller shutter will make two short up/down movements. The drive will generate several audio signals.



METHOD NO. 2:

1. Press and hold the programming button on the transmitter head for 2 seconds.
2. The roller shutter will make short UP/DOWN movements. The drive will generate an audio signal.
3. Press and hold the STOP button on the remote control for 2 seconds.
4. The roller shutter will make two short UP/DOWN movements. The drive will generate several audio signals.



Example: The roller shutter is programmed on the third or fourth channel of the remote control. The user wants to re-program it on channel 3 only. To do that, select channel 3 on the remote control. Press the P2 button twice (the drive will confirm each button press). Then, switch to channel 4 on the remote control and press the P2 button again. The motor confirms and stops operating on channel 4.

12. SWITCHING BETWEEN OPERATION WITH / WITHOUT POWER BACKUP:

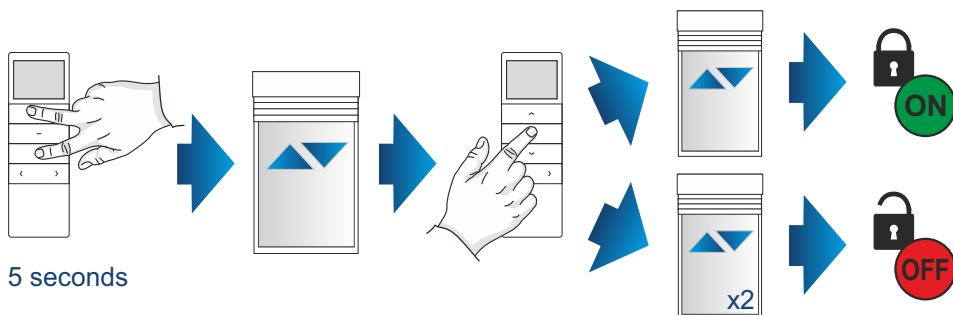


An interval longer than 2 minutes between subsequent button presses will result in an automatic exit from the programming mode and the changes will not be saved.

To switch the pulse mode on, follow the procedure described below. If you want to switch off a given mode, the same procedure shall be repeated.

The impulse function means that after the UP or DOWN button is shortly pressed, the drive will operate incrementally, and after the button is pressed and held for longer than 2 seconds, the drive will operate continuously.

1. Press and hold the UP and DOWN buttons simultaneously for 5 seconds.
 3. The roller shutter will make short UP/DOWN movements.
 4. Press the STOP button.
- if the roller shutter makes a short movement in both directions, the pulse mode is ON.
 - if the roller shutter makes two short movements in both directions, the pulse mode is OFF.



13. SPEED ADJUSTMENT / SOFT STOP FUNCTION.



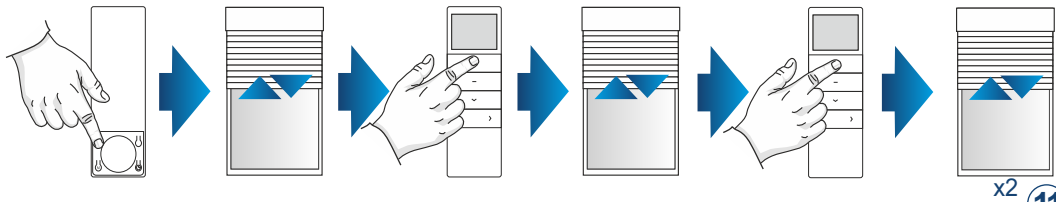
If the speed adjustment procedure is performed and the drive does not react, it shall mean that the drive is set on the lowest or highest speed.

The drive has three operating speeds: 13 rev./min, 10 rev./min, 7 rev./min. The highest speed is set by default.

INCREASING THE DRIVE SPEED / SWITCHING ON THE SOFT STOP:

Once the highest speed is set, repeated performance of the speed adjustment procedure will switch on the soft stop function.

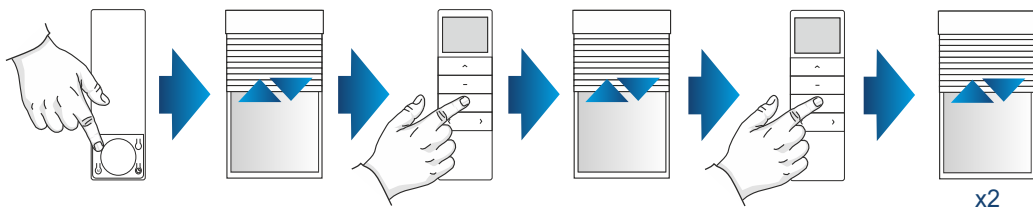
1. Press the P2 programming button. The roller shutter will make short UP/ DOWN movements. The drive will generate an audio signal.
2. Press the UP button. The roller shutter will make short UP/ DOWN movements. The drive will generate an audio signal.
3. Press the UP button . The roller shutter will make two short UP/ DOWN movements. The drive will generate several audio signals.



DECREASING THE DRIVE SPEED / SWITCHING OFF THE SOFT STOP:

Once the highest speed is set, repeated performance of the speed adjustment procedure will switch on the soft stop function.

1. Press the P2 programming button. The roller shutter will make short UP/ DOWN movements. The drive will generate an audio signal.
2. Press the DOWN button. The roller shutter will make short UP/ DOWN movements. The drive will generate an audio signal.
3. Press the DOWN button. The roller shutter will make two short UP/ DOWN movements. The drive will generate several audio signals.



WARNING - FOR THE SAFETY OF PEOPLE, IT IS IMPORTANT TO FOLLOW THIS USER MANUAL. KEEP THIS USER MANUAL AT ALL TIMES.



PORTOS TR7

spółka z ograniczoną odpowiedzialnością

ul. Złota 71

62-800 Kalisz

tel 62 768 40 11

E-mail: sekretariat@portosrolety.pl

www.portosrolety.pl